



**2016**

**New South Wales Youth Championship**

**Saturday 1<sup>st</sup> October to Monday 3<sup>rd</sup> October 2016**

*Organising Authority*  
**Australian Sailing**

*Host Club*  
**Georges River 16' Sailing Club**



# **OPTIMIST GREEN FLEET SAILING INSTRUCTIONS**



Atchison Street, St Leonards NSW 2061  
T 02 8424 7200 [nswevents@sailing.org.au](mailto:nswevents@sailing.org.au)  
[www.sailing.org.au](http://www.sailing.org.au) ABN 26 602 997 562

# 2016

## New South Wales Youth Championship

# OPTIMIST GREEN FLEET

# SAILING INSTRUCTIONS

### **G1. RULES**

The Optimist Green Fleet (Green Fleet) regatta will be governed by the [World Sailing Introductory Rules for Racing](#) and the [Special Regulations \(Part 2\)](#) (Off the Beach Classes) of Australian Sailing (Yachting Australia).

### **G2. NOTICES TO COMPETITORS**

Notices to Competitors will be posted on the Official Notice Board located in the Regatta Office at the eastern end of Georges River 16 Foot Sailing Club (GR16SC).

### **G3. CHANGES TO SAILING INSTRUCTIONS**

Any change to the Sailing Instructions will be posted on the Official Notice Board before 0900 on the day it will take effect, except that any change to the schedule of races will be posted by 1800 on the day before it will take effect.

### **G4. SIGNALS MADE ASHORE**

- G4.1. Signals made ashore will be displayed from the official signal mast located at the western end of GR16SC adjacent to the boat ramp.
- G4.2. When flag AP is displayed ashore, '1 minute' is replaced with 'not less than 30 minutes' in the race signal AP.
- G4.3. A green flag flown ashore means the Race Committee consider the conditions, and safety and support mechanisms, are suitable and that racing should proceed as per the Schedule. It is recommended that competitors remain ashore until this green flag is flown.

### **G5. SCHEDULE OF RACES**

- G5.1. Events and Races are scheduled in accordance with Attachment G1.
- G5.2. Green Fleet will not have a maximum number of races, however will not sail more than 3 races back to back without having a rest break and coaches' debrief ashore.
- G5.3. When more than one race will be held on the same day, the Warning Signal for subsequent races will be made as soon as practicable after the finish of the previous race, but not sooner than five minutes after the last boat finished the previous race. To alert boats that another race or sequence of races will start soon the Postponement Signal shall be displayed before any Warning Signal is displayed.
- G5.4. On the last day of the regatta no Warning Signal will be made after 1500 hours.

### **G6. CLASS FLAG**

The Class Flag will be a Green flag with a white Optimist emblem.

### **G7. COURSE AREAS**

Attachment G2 shows the Course Areas and the allocation of classes to Course Areas. The Optimist Green Fleet will race on the waters of Sandringham Bay and the Georges River adjacent to GR16SC and its launching area.

### **G8. COURSES**

Attachment G3 describes the Course layout, the order in which the Marks are to be rounded and the side on which each mark is to be left.

### **G9. MARKS**

The Marks are described in Attachment G4.

### **G10. AREAS THAT ARE OBSTRUCTIONS**

- G10.1. Boats are not required to comply with navigation marks when racing.

G10.2. Attention is drawn to the RMS NSW Maritime regulation where no racing vessel shall sail on the shoreward side of any permanent mooring.

#### **G11. THE START**

The starting line will be between a staff displaying an orange flag on the Race Committee Vessel at the starboard end and the port end Start Mark.

#### **G12. CHANGE OF THE NEXT LEG OF THE COURSE**

The Race Committee will not change a leg of the course after the start signal..

#### **G13. THE FINISH**

G13.1. The finish line will be between a staff displaying an orange flag on the Race Committee Vessel and the port end Finish Mark.

G13.2. The Race Committee Vessel may hold position by using its engines. Any effects will not be grounds for granting redress. This alters rules 60.1(b) and 62.

#### **G14. TIME LIMIT**

G14.1. The time limit for the first boat in each class will be 40 minutes.

G14.2. The target time for each race is 20 minutes.

G14.3. Boats failing to finish within 10 minutes after the first boat sailed the course and finishes will be scored Did Not Finish without a hearing. This changes rules 35, A4 and A5.

#### **G15. PROTESTS AND REQUESTS FOR REDRESS**

If you think you or another boat has broken a rule or if you are unclear about the rules at any time during the race, you must describe the incident to a rules advisor after the race. The rules advisor may then deduct two points from the score of any boat that has broken a rule. If the offence is serious, the advisor may deduct extra points to the boat's score.

#### **G16. SCORING**

G16.1. Where up to five races are completed, all races will count.

G16.2. Where six to twelve races are completed a boat's series score will exclude their worst result.

G16.3. Where more than twelve races are completed a boat's series score will exclude their worst two results.

G16.4. A minimum of two completed races will constitute a series.

#### **G17. SAFETY REQUIREMENTS**

G17.1. All skippers shall sign on prior to going afloat for racing in any session.

G17.2. All skippers shall sign off at the end of any racing session not later than 15 minutes after coming ashore.

G17.3. A boat that retires shall notify the Race Committee or a Coach prior to leaving the course area and sign off once ashore.

G17.4. The Race Committee may abandon racing when the wind is consistently above 15 knots.

G17.5. No race shall be continued if wind above 18 knots is recorded at the Green Fleet Start boat.

#### **G18. REPLACEMENT OF CREW OR EQUIPMENT**

G18.1. No changes to competitors will be accepted after close of registration on Saturday 1 October 2016.

G18.2. Substitution of damaged or lost equipment will not be allowed unless authorised by the Race Committee. Requests for substitution shall be made to the Race Committee at the first reasonable opportunity.

#### **G19. EQUIPMENT AND MEASUREMENT CHECKS**

G19.1. All boats shall sign a safety equipment declaration upon registration

G19.2. A boat or equipment may be inspected at any time for compliance with the class rules and Sailing Instructions. On the water, a boat can be instructed by a Race Committee equipment inspector or measurer to proceed immediately to a designated area for inspection.

#### **G20. ADVERTISING**

Advertising shall be in accordance with World Sailing Regulation 20.

#### **G21. OFFICIAL BOATS**

G21.1. Official boats on Course Area "D" will display a Lime Green flag with a black letter "D"

G21.2. Media boat(s) will be marked with a blue flag with the word "Media".

## **G22. SUPPORT BOATS**

- G22.1. Only event appointed race committee and coach boats may enter the racing area. Only event appointed coaches are permitted to have direct interaction with competitors during each racing session.
- G22.2. Support and private coach boats are not permitted to interact with competitors or to enter the racing area at any time from the first warning signal of a racing session until the last boat has finished the last race of a session and the race committee has signalled for boats to return to shore.
- G22.3. Breaches of Green Fleet Instructions G22 and G24 will result in each sailor associated with that support or coach boat being penalised 5 points in each race of that session without a hearing. This amends the Introductory Rules of Sailing.
- G22.4. Support boats while afloat must display a numbered white flag supplied by the Organising Authority. To obtain this flag for the Support boats, a refundable deposit of \$50 (credit card details only, no cash) is to be lodged with the Organising Authority upon registration.

## **G23. RUBBISH DISPOSAL**

Boats shall not put rubbish in the water.

## **G24. RADIO COMMUNICATION**

Except in an emergency, a boat shall neither make radio transmissions while racing nor receive radio communications not available to all boats. This restriction also applies to mobile telephones.

## **G25. PRIZES AND PRESENTATION**

- G25.1. There are no prizes for overall placings in Green Fleet.
- G25.2. Achievement and encouragement prizes may be awarded by the Organising Authority.
- G25.3. Other prizes may be awarded at the discretion of the Organising Authority.
- G25.4. The presentation of prizes will take place in GR16SC as soon as practicable after the completion of the last race of the Regatta.

## **G26. RIGHTS TO USE NAME AND LIKENESS**

In participating in the Regatta, a competitor automatically grants to the Organising Authority, and the sponsors of the Regatta, the right in perpetuity, to make, use and show, from time to time and at their discretion, any motion pictures, still motion pictures and live, taped or filmed television, digital images and other reproductions of him/her during the period of the competition for the Regatta and in all material related to the Regatta without compensation.

## **G27. DISCLAIMER OF LIABILITY**

Competitors participate in the Regatta entirely at their own risk. See rule 4, Decision to Race. The Organising Authority will not accept any liability for material damage or personal injury or death sustained in conjunction with or prior to, during, or after the Regatta. Attention is drawn to clauses 16 and 17 of the Notice of Race.

## **G28. INSURANCE**

All boats shall have third party insurance cover of not less than \$AUD 5,000,000 (recommend \$AUD 10,000,000 or the equivalent thereof in any other convertible currency) for any accident. All owners / competitors who sign the entry forms are deemed to have made a declaration that they hold such cover. Owners / competitors not holding this cover shall withdraw their entry. The owner / competitor must be able to display proof of cover if requested to do so.

**ATTACHMENT 1**  
**to 2016 NSW Youth Championship Optimist Green Fleet Sailing Instructions**

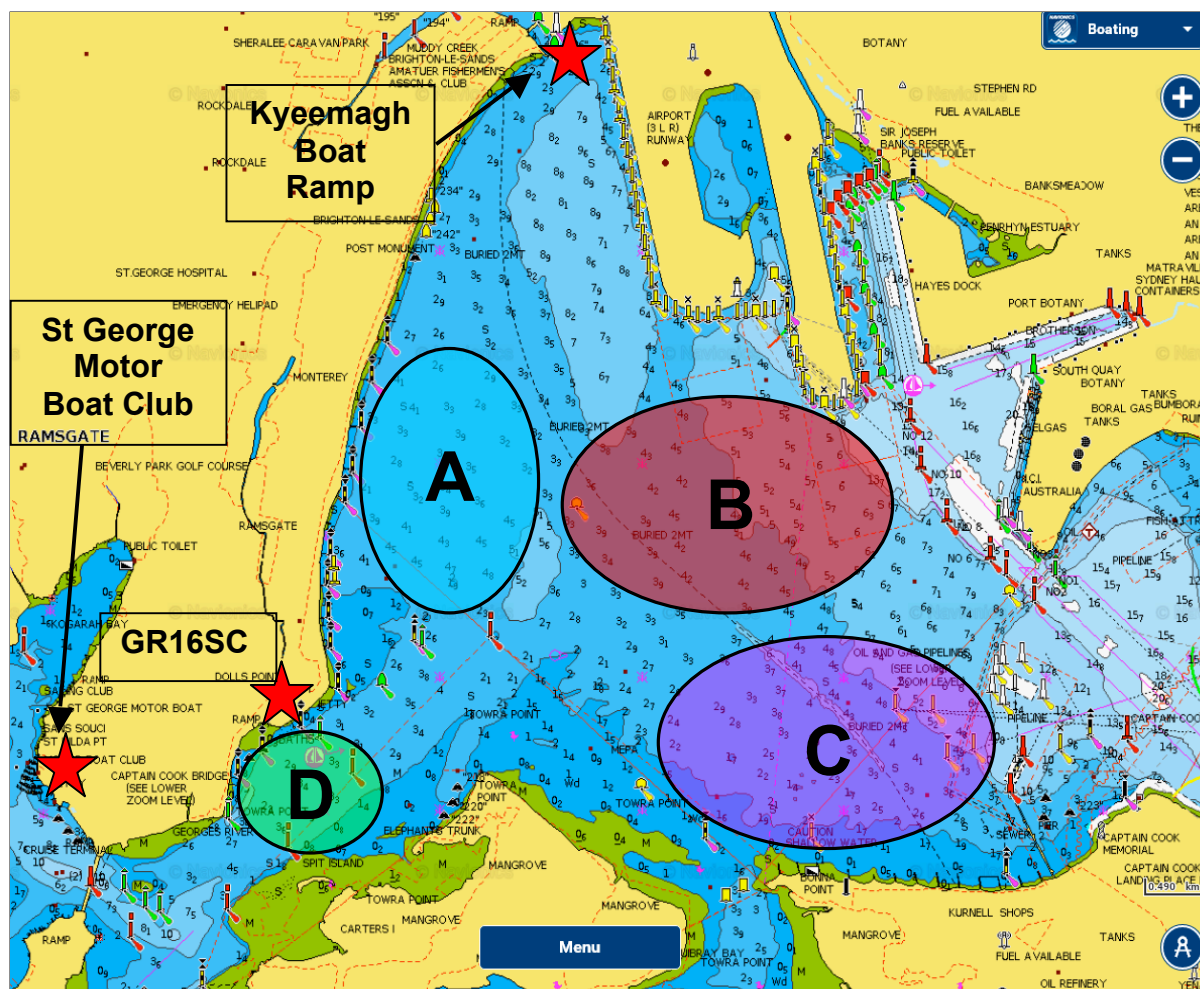
**GREEN FLEET CHAMPIONSHIP SCHEDULE**

<b>Date</b>	<b>Time<sup>1</sup></b>	<b>Event</b>
Saturday 1 October	0830 to 1000	Registration
	1000 to 1020	Competitor Regatta Briefing
	1100	Green Fleet coaches' session.
	1200	First Warning Signal. Subsequent races will be conducted in accordance with Instruction 5.
Sunday 2 October <sup>1</sup>	1000	Green Fleet coaches' session
	1100	First Warning Signal. Subsequent races will be conducted in accordance with Instruction 5.
	ASAP after racing	Presentation
Monday 3 October	1000	Green Fleet coaches' session
	1100	First Warning Signal. Subsequent races will be conducted in accordance with Instruction 5.
	Instruction 25.4	Regatta Presentation

<sup>1</sup> Note that Daylight Saving begins in NSW on Sunday 2 October 2016. All times for Sunday 2 and Monday 3 October 2016 are in Eastern Daylight Saving Time (EDST)

# ATTACHMENT 2 to 2016 NSW Youth Championship Optimist Green Fleet Sailing Instructions

## COURSE AREAS AND CLASS ALLOCATION

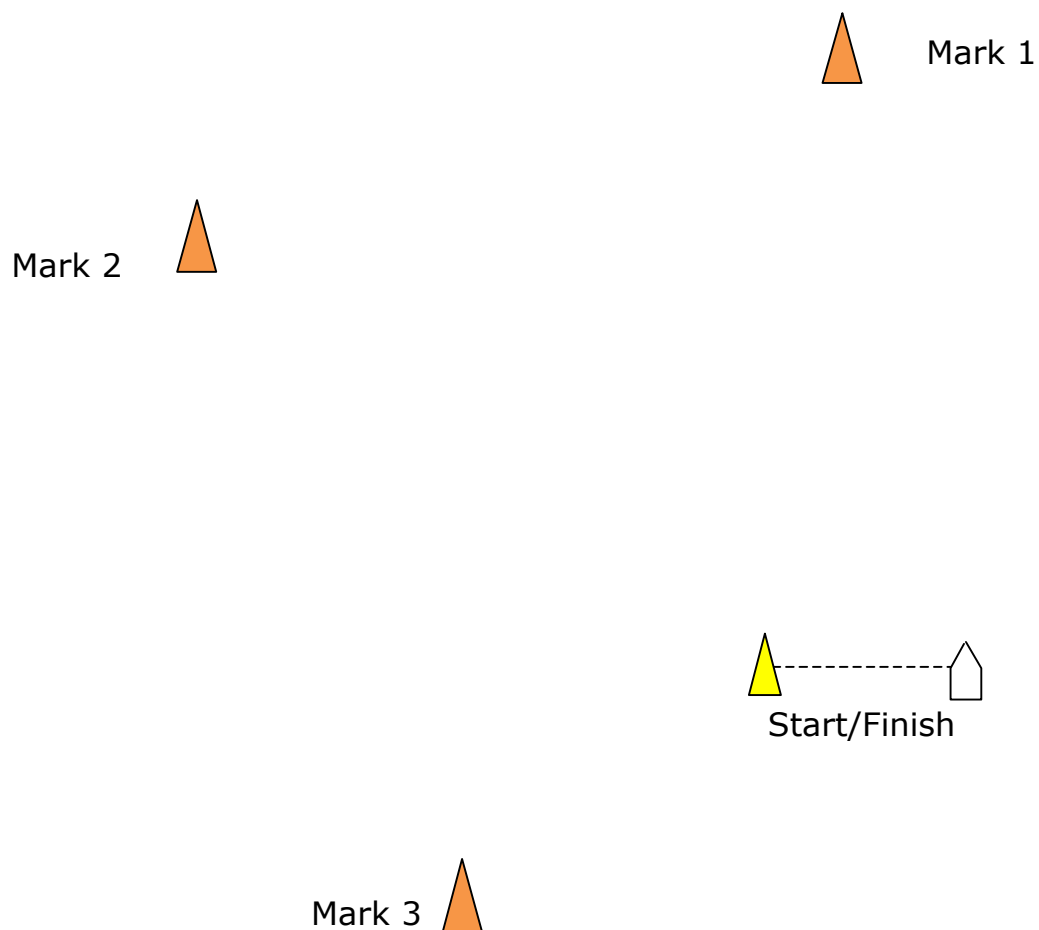


Class Allocation to Course Area	COURSE AREA			
	A	B	C	D
	Optimist Open	29er	420	Optimist Green
	Optimist Intermediate	Laser Radial	Flying Eleven	Alternative course area for Optimist Intermediate <sup>2</sup>
	Sabot One-Up	Laser 4.7	O'Pen BIC	
			Techno 293	

<sup>2</sup> Optimist Intermediate division may be allocated to Course Area D based on weather or safety considerations

**ATTACHMENT 3**  
**to 2016 NSW Youth Championship Optimist Green Fleet Sailing Instructions**

**APPROXIMATE COURSE DIAGRAM AND COURSE DESCRIPTION**  
**(INSTRUCTION 8)**



<b>Optimist Green Fleet Course</b> (All Marks to port)
Start – Mark 1 – Mark 2 – Mark 3 – Mark 1 – Mark 2 – Mark 3 – Finish

**ATTACHMENT 4**  
**to 2016 NSW Youth Championship Optimist Green Fleet Sailing Instructions**

**MARKS OF THE COURSE**

<b>Course Area</b>	<b>START MARK</b>	<b>COURSE MARKS</b>	<b>FINISH MARK</b>
<b>D</b>	Danbuoy displaying an Orange Flag with black S	Orange conical inflatable buoys	Danbuoy displaying an Orange Flag with black S