



**2016**

## **New South Wales Youth Championship**

**Saturday 1<sup>st</sup> October to Monday 3<sup>rd</sup> October 2016**

*Organising Authority*

**Australian Sailing**

*Host Club*

**Georges River 16 Foot Sailing Club**



# **SAILING INSTRUCTIONS**



Atchison Street, St Leonards NSW 2061  
T 02 8424 7200 [nswevents@sailing.org.au](mailto:nswevents@sailing.org.au)  
[www.sailing.org.au](http://www.sailing.org.au) ABN 26 602 997 562

# 2016

## New South Wales Youth Championship

### SAILING INSTRUCTIONS

#### 1. RULES

- 1.1. The regatta will be governed by the rules as defined in the Racing Rules of Sailing (RRS), the Prescriptions and Special Regulations (Part 2), (Off the Beach Classes) of Australian Sailing (formerly Yachting Australia).
- 1.2. The Optimist Green Fleet will be governed by separately issued Sailing Instructions.

#### 2. NOTICES TO COMPETITORS

Notices to Competitors will be posted on the Official Notice Board located in the Regatta Office at the eastern end of Georges River 16 Foot Sailing Club (GR16SC).

#### 3. CHANGES TO SAILING INSTRUCTIONS

Any change to the Sailing Instructions will be posted on the Official Notice Board before 0900 on the day it will take effect, except that any change to the schedule of races will be posted by 1800 on the day before it will take effect.

#### 4. SIGNALS MADE ASHORE

- 4.1. Signals made ashore will be displayed from the official signal mast located at the western end of GR16SC adjacent to the boat ramp..
- 4.2. When flag AP is displayed ashore, '1 minute' is replaced with 'not less than 30 minutes' in the race signal AP.
- 4.3. A green flag flown ashore means the Race Committee consider the conditions, and safety and support mechanisms, are suitable and that racing should proceed as per the Schedule. It is recommended that competitors remain ashore until this green flag is flown.

#### 5. SCHEDULE OF EVENTS AND RACES

- 5.1. Events and Races are scheduled in accordance with Attachment 1.
- 5.2. The Race Committee may, at its sole discretion, run additional races on any day where the forecast indicates it is desirable to do so.
- 5.3. When more than one race will be held on the same day, the Warning Signal for subsequent races will be made as soon as practicable after the finish of the previous race. To alert boats that another race or sequence of races will start soon the Postponement Signal shall be displayed before any Warning Signal is displayed.
- 5.4. On the last day of the regatta no Warning Signal will be made after 1500 hours.

#### 6. CLASS IDENTIFICATION

All Optimist Intermediate boats shall display a coloured ribbon permanently fixed and free to fly from the top of the sprit. These ribbons will be provided by the Organising Authority at registration on day 1

#### 7. CLASS FLAGS

Class flags will be a class insignia on a coloured background as described in the table below.

Class	Background Colour
29er	Orange
420	White
Flying 11	White
Laser 4.7	Yellow
Laser Radial	Light Blue
Open BIC	White
Optimist (Open)	White
Optimist (Intermediate)	Blue
Optimist (Green)	Green
Techno 293	White

Sabot One Up	White
--------------	-------

## 8. COURSE AREAS

Attachment 2 shows the Course Areas and the allocation of classes to Course Areas.

## 9. COURSES

- 9.1. Attachment 3 describes the Course layouts and the order in which the Marks are to be rounded.
- 9.2. The course to be sailed with be identified by its alpha-numeric designator on a board and will be displayed before or with the Warning Signal for each division. This board will be displayed on the course area Race Committee Vessel.
- 9.3. For the Optimist Intermediate Fleet only, there will be no displayed course and all races shall be an O1 course.

## 10. MARKS

The Marks are described in Attachment 4.

## 11. AREAS THAT ARE OBSTRUCTIONS

- 11.1. Boats are not required to comply with navigation marks when racing.
- 11.2. Attention is drawn to the RMS NSW Maritime regulation where no racing vessel shall sail on the shoreward side of any permanent mooring.

## 12. THE START

- 12.1. The starting line will be between a staff displaying an orange flag on the Race Committee Vessel at the starboard end, and the port end Start Mark. In the case of a "pin boat" being used the port end of the line shall be the flagstaff displaying the orange flag on the pin boat.
- 12.2. Boats whose warning signal has not been made shall avoid the starting area during the starting sequence for other races.
- 12.3. A boat starting later than 4 minutes after her starting signal will be scored Did Not Start without a hearing. This changes rule A4.
- 12.4. If Flag U has been displayed as the Preparatory Signal no part of a boat's hull, crew or equipment shall be in the triangle formed by the ends of the starting line and Mark One during the last minute before the starting signal. If a boat breaks this rule and is identified she shall be disqualified without a hearing, but not if the race is restarted or resailed or postponed or abandoned before the starting signal. This changes rule 26.
- 12.5. Race Committee vessels may hold position by using their engines. Any effects will not be grounds for granting redress. This alters rules 60.1(b) and 62.

## 13. CHANGE OF THE NEXT LEG OF THE COURSE

- 13.1. To change the next leg of the course, the race committee will move the original mark or the finishing line to a new position.
- 13.2. Boats shall pass between the race committee boat signalling the change of the next leg and the nearby mark, leaving the mark to port and the race committee boat to starboard. This changes rule 28.

## 14. THE FINISH

- 14.1. The finish line will be between a staff displaying an orange flag on the Race Committee Vessel and the Finish Mark.
- 14.2. The Race Committee Vessel may hold position by using its engines. Any effects will not be grounds for granting redress. This alters rules 60.1(b) and 62.

## 15. PENALTY SYSTEM

- 15.1. For the 29er and Techno 293 classes rule 44.1 is changed so that the Two-Turns Penalty is replaced by the One-Turn Penalty.
- 15.2. Appendix P will apply as changed by Instructions 15.1 and 15.3.
- 15.3. Rule P2.3 will not apply and rule P2.2 is changed so that it will apply to any penalty after the first one.

## 16. TIME LIMIT

- 16.1. The time limit for the first boat in each class will be 60 minutes.
- 16.2. Boats failing to finish within 15 minutes after the first boat sailed the course and finishes will be scored Did Not Finish without a hearing. This changes rules 35, A4 and A5.

## **17. ARBITRATION**

- 17.1. An arbitration hearing may be conducted for any protests lodged in accordance with Rule 61 and Instruction 16, which allege an infringement of a rule of Part 2 or Part 4 or Rule 31. Such hearings will be held subsequent to the protest being lodged and prior to the protest hearing.
- 17.2. The arbitrator will decide the time and place of the arbitration hearing and such advice may be given verbally. One representative of each boat shall attend the arbitration hearing and no witnesses will be called. The arbitrator shall decide the manner in which testimony is given.
- 17.3. After taking testimony at the arbitration hearing the arbitrator shall make one of the following conclusions:
  - a. The protest does not comply with Rule 61 and the protestor may withdraw the protest.
  - b. The matter shall proceed to a protest hearing. This may be because the rules other than Part 2 or Part 4 or Rule 31 are involved or may be involved, or because the evidence is too complex or divergent to reach a reasonable and timely conclusion, or due to the apparent severity of the alleged infringement, or for any other reason the decided by the arbitrator.
  - c. No rule was broken and the protestor may withdraw the protest.
  - d. A rule was broken by one or more of the boats involved, the infringing boat(s) may accept a 20% scoring penalty in accordance with rule 44.3(c), and if so accepted the protestor shall withdraw the protest.
- 17.4. An arbitration hearing will not be re-opened. No conclusion of an arbitrator will be subject to appeal or be grounds for redress.
- 17.5. Should the protest proceed to a protest hearing then the arbitrator may be a member of the Protest Committee. Any evidence given by an arbitrator during a protest hearing shall be given only in the presence of the parties to the hearing.

## **18. PROTESTS AND REQUESTS FOR REDRESS**

- 18.1. Boats intending to protest shall inform the Race Committee immediately after finishing, by approaching the starboard side of the Race Committee boat at the finish line, after finishing and hailing the protested boats sail number. This changes RRS 61.1.
- 18.2. A National Jury has been appointed. Decisions of the Jury will be final as provided in rule 70.5
- 18.3. To encourage the taking of penalties afloat, Jury members may blow a whistle when they observe what they believe to be a breach of a rule.
- 18.4. Protest forms are available at the regatta office. Protests and requests for redress or reopening shall be delivered there within the appropriate time limit.
- 18.5. For each class, the protest time limit is 60 minutes after the last boat in her class has finished the last race of the day.
- 18.6. Notices will be posted no later than 30 minutes after the protest time limit to inform competitors of hearings in which they are parties or named as witnesses. Hearing will be held in the protest room, located in the Club Board Room.
- 18.7. Notices of protests by the race committee or protest committee will be posted to inform boats under rule 61.1(b).
- 18.8. A list of boats that, under Instruction 15.2, have been penalised for breaking rule 42 will be posted on the notice board.
- 18.9. Breaches of Instructions 12.2, 20, 25 and 27 will not be grounds for a protest by a boat. This changes rule 60.1(a). Penalties for these breaches may be less than disqualification if the protest committee so decides. The scoring abbreviation for a discretionary penalty imposed under this Instruction will be DPI.
- 18.10. On the last day of racing a request for reopening a hearing shall be delivered,
  - a. within the protest time limit if the party requesting the reopening was informed of the decision on the previous day, and
  - b. no later than 30 minutes after the party requesting the reopening was informed of the decision on that day.This changes rule 66.
- 18.11. On the last scheduled day of racing a request for redress based on a protest committee decision shall be delivered no later than 30 minutes after the decision was posted. This changes rule 62.2.

## **19. SCORING**

- 19.1. Ten races are scheduled for the Championship.
- 19.2. Where up to three races are completed, all races will count.
- 19.3. Where four to ten races are completed a boat's series score will exclude their worst result.
- 19.4. A minimum of two completed races will constitute a series.

## **20. SAFETY REQUIREMENTS**

- 20.1. All skippers shall sign on prior to going afloat for racing in any session.
- 20.2. All skippers shall sign off at the end of any racing session and within the protest time limit for the last racing session of the day.
- 20.3. Boats failing to comply with Instructions 20.1 and 20.2 shall receive a five point penalty (but no boat is to be scored worse than DSQ) in the race held closest to the indiscretion without a hearing. This changes rules 63.1 and A5.
- 20.4. A boat that retires should notify the Race Committee prior to leaving the course area and will sign off once ashore.

## **21. REPLACEMENT OF CREW OR EQUIPMENT**

- 21.1. No changes to helmsman will be accepted after close of registration on Saturday 1 October 2016.
- 21.2. Changes of forward hand will be permitted at the discretion of the Race Committee on application in writing.
- 21.3. Substitution of damaged or lost equipment will not be allowed unless authorised by the Race Committee. Requests for substitution shall be made to the Race Committee at the first reasonable opportunity.

## **22. EQUIPMENT AND MEASUREMENT CHECKS**

A boat or equipment may be inspected at any time for compliance with the class rules and Sailing Instructions. On the water, a boat can be instructed by a Race Committee equipment inspector or measurer to proceed immediately to a designated area for inspection.

## **23. ADVERTISING**

Advertising shall be in accordance with World Sailing Regulation 20.

## **24. OFFICIAL BOATS**

- 24.1. Official boats will be marked as follows:
  - a. COURSE A – Light Blue flag with a black letter "A"
  - b. COURSE B – Red flag with a black letter "B"
  - c. COURSE C – Pink flag with a black latter "C"
  - d. COURSE D – Lime Green flag with a black letter "D"
- 24.2. Jury boats will be marked with a flag with a black letter "J".
- 24.3. Media boat(s) will be marked with a blue flag with the word "Media".

## **25. SUPPORT BOATS**

- 25.1. Team leaders, coaches and other support personnel shall stay a minimum of 50m outside areas where boats are racing from the time of the Preparatory Signal for the first class to start until all boats have finished or retired or the Race Committee signals a postponement, general recall or abandonment. This will apply at all times except when asked to assist by the Race Committee.
- 25.2. Support boats while afloat must display a numbered white flag supplied by the Organising Authority. To obtain this flag for the Support boats, a refundable deposit of \$50 (credit card details only, no cash) is to be lodged with the Organising Authority upon registration.

## **26. RUBBISH**

- 26.1. No rubbish is to be dumped into the water. All rubbish is to be handed to official boats or taken ashore.
- 25.2. Single use plastic water bottles are not to be taken into the racing area.

## **27. RADIO COMMUNICATION**

Except in an emergency, a boat shall neither make radio transmissions while racing nor receive radio communications not available to all boats. This restriction also applies to mobile telephones.

**28. PRIZES AND PRESENTATION**

- 28.1. Prizes will be awarded to the crews of the first three placed boats in each class.
- 28.2. Other prizes may be awarded at the discretion of the Organising Authority.
- 28.3. The presentation of prizes will take place in GR16SC as soon as practicable after the completion of the last race of the Regatta.

**29. RIGHTS TO USE NAME AND LIKENESS**

In participating in the Regatta, a competitor automatically grants to the Organising Authority, and the sponsors of the Regatta, the right in perpetuity, to make, use and show, from time to time and at their discretion, any motion pictures, still motion pictures and live, taped or filmed television, digital images and other reproductions of him/her during the period of the competition for the Regatta and in all material related to the Regatta without compensation.

**30. DISCLAIMER OF LIABILITY**

Competitors participate in the Regatta entirely at their own risk. See rule 4, Decision to Race. The Organising Authority will not accept any liability for material damage or personal injury or death sustained in conjunction with or prior to, during, or after the Regatta. Attention is drawn to clauses 16 and 17 of the Notice of Race.

**31. INSURANCE**

All boats shall have third party insurance cover of not less than \$AUD 5,000,000 (recommend \$AUD 10,000,000 or the equivalent thereof in any other convertible currency) for any accident. All owners / competitors who sign the entry forms are deemed to have made a declaration that they hold such cover. Owners / competitors not holding this cover shall withdraw their entry. The owner / competitor must be able to display proof of cover if requested to do so.

**ATTACHMENT 1**  
**to 2016 NSW Youth Championship Sailing Instructions**

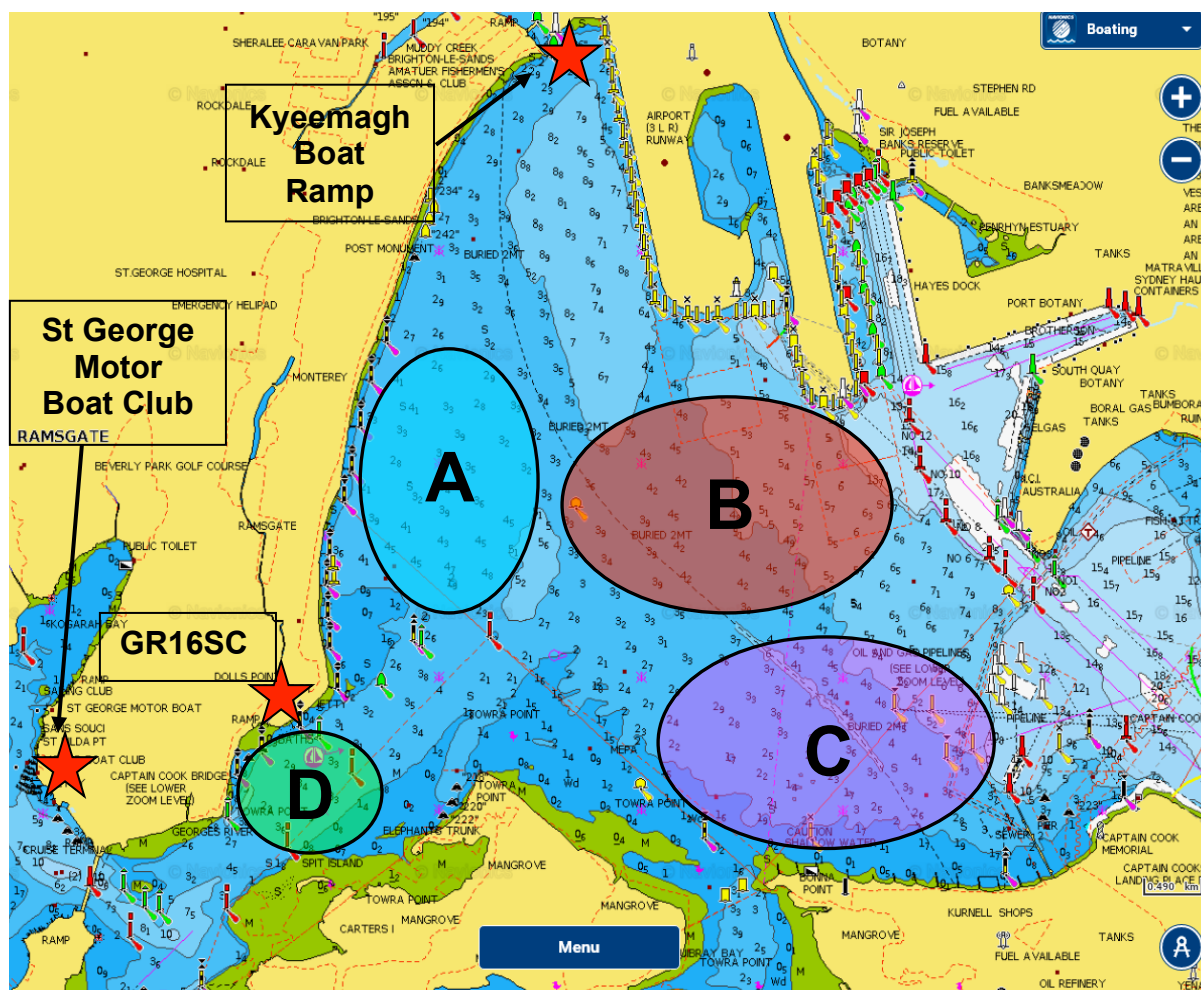
**CHAMPIONSHIP SCHEDULE**

<b>Date</b>	<b>Time<sup>1</sup></b>	<b>Event</b>
Saturday 1 October	0830 to 1000	Registration
Saturday 1 October	1000	Competitor Regatta Briefing
Saturday 1 October	1130	First Warning Signal. Subsequent races will be conducted in accordance with Instruction 5. It is the Race Committee's intention to conduct three races.
Sunday 2 October	0830	Competitor Briefing
Sunday 2 October <sup>1</sup>	1000	First Warning Signal. Subsequent races will be conducted in accordance with Instruction 5. It is the Race Committee's intention to conduct four races.
Monday 3 October	0830	Competitor Briefing
Monday 3 October	1000	First Warning Signal. Subsequent races will be conducted in accordance with Instruction 5. It is the Race Committee's intention to conduct three races.
Monday 3 October	Instruction 28.2	Regatta Presentation

<sup>1</sup> Note that Daylight Saving begins in NSW on Sunday 2 October 2016. All times for Sunday 2 and Monday 3 October 2016 are in Eastern Daylight Saving Time (EDST)

# ATTACHMENT 2 to 2016 NSW Youth Championship Sailing Instructions

## COURSE AREAS AND CLASS ALLOCATION



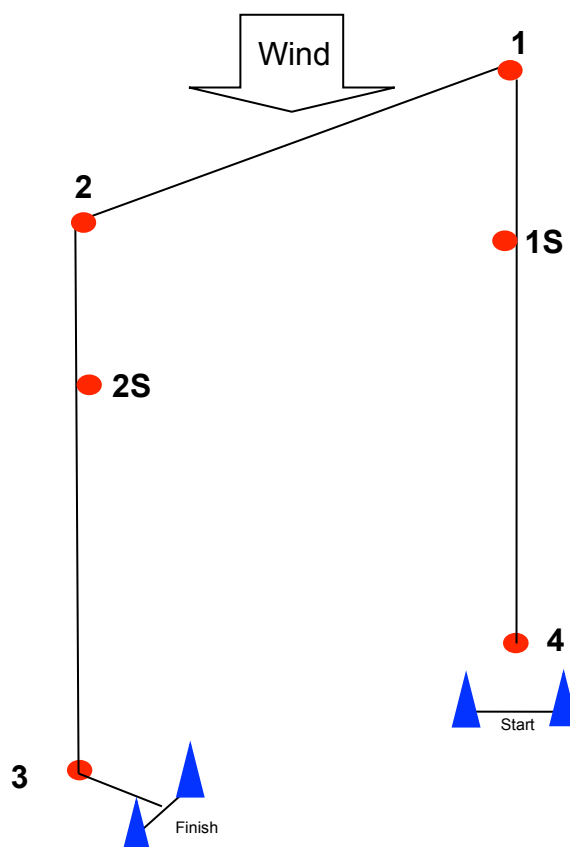
	COURSE AREA			
	A	B	C	D
Class Allocation to Course Area	Optimist Open	29er	420	Optimist Green
	Optimist Intermediate	Laser Radial	Flying Eleven	Alternative course area for Optimist Intermediate <sup>2</sup>
	Sabot One-Up	Laser 4.7	O'Pen BIC	
			Techno 293	

<sup>2</sup> Optimist Intermediate division may be allocated to Course Area D based on weather or safety considerations



**ATTACHMENT 3**  
**to 2016 NSW Youth Championship Sailing Instructions**

**APPROXIMATE COURSE DIAGRAMS AND COURSE DESCRIPTIONS**  
**FOR TRAPEZOID COURSES**  
**(INSTRUCTION 8)**

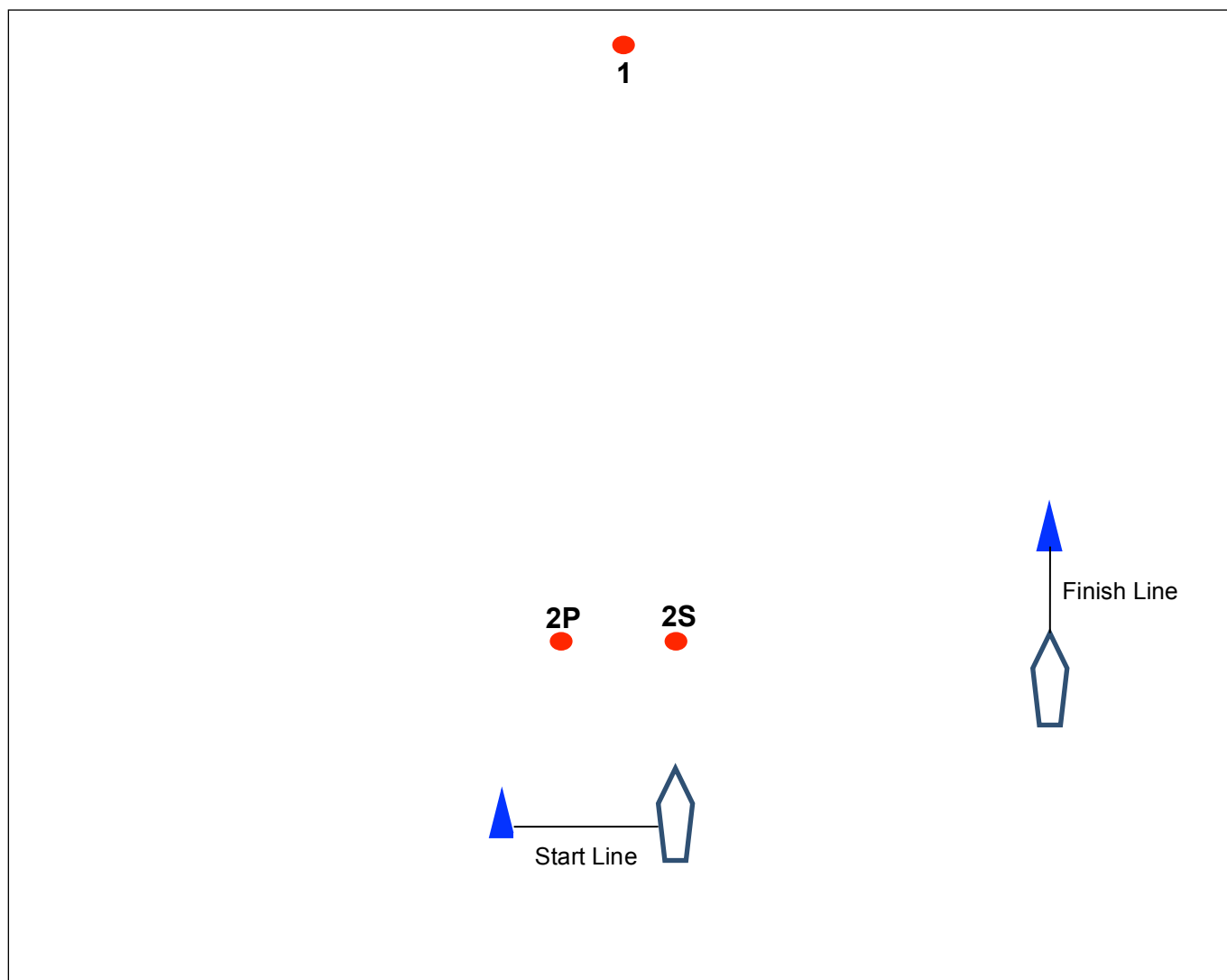


Course Designator	(All Marks to port)
<b>I1</b>	Start – 1 – 2 – 3 – Finish
<b>I2</b>	Start – 1 – 4 – 1 – 2 – 3 – Finish
<b>I3</b>	Start – 1 – 4 – 1 – 4 – 1 – 2 – 3 – Finish
<b>I1S</b>	Start – 1S – 2S – 3 – Finish
<b>I2S</b>	Start – 1S – 4 – 1S – 2S – 3 – Finish
<b>I3S</b>	Start – 1S – 4 – 1S – 4 – 1S – 2S – 3 – Finish
<b>O1</b>	Start – 1 – 2 – 3 – Finish
<b>O2</b>	Start – 1 – 2 – 3 – 2 – 3 – Finish
<b>O3</b>	Start – 1 – 2 – 3 – 2 – 3 – 2 – 3 – Finish
<b>O1S</b>	Start – 1S – 2S – 3 – Finish
<b>O2S</b>	Start – 1S – 2S – 3 – 2S – 3 – Finish
<b>O3S</b>	Start – 1S – 2S – 3 – 2S – 3 – 2S – 3 – Finish

Instruction 8.3. For the Optimist Intermediate Fleet only, there will be no displayed course and all races shall be an O1S course

**ATTACHMENT 3**  
**to 2016 NSW Youth Championship Sailing Instructions**

**APPROXIMATE COURSE DIAGRAMS AND COURSE DESCRIPTIONS**  
**FOR WINDWARD LEEWARD COURSES**  
**(INSTRUCTION 8)**



Course Designator	(All marks to port)
L1	Start – 1 – 2S – Finish
L2	Start – 1 – 2P/2S – 1 – 2S – Finish
L3	Start – 1 – 2P/2S – 1 – 2P/2S – 1 – 2S – Finish

**ATTACHMENT 4**  
**to 2016 NSW Youth Championship Sailing Instructions**

**MARKS OF THE COURSE**

<b>Course Area</b>	<b>START MARK</b>	<b>COURSE MARKS</b>	<b>FINISH MARK</b>
<b>A</b>	Committee Boat displaying an Orange Flag <b>OR</b> Green cylinder with an orange band	Pink Cylindrical Inflatable buoys.	Black and White Check cylindrical inflatable buoy.
<b>B</b>	Committee Boat displaying an Orange Flag <b>OR</b> Green cylinder with an orange band	Yellow cylindrical inflatable buoys.	Black and White Check cylindrical inflatable buoy.
<b>C</b>	Committee Boat displaying an Orange Flag <b>OR</b> Green cylinder with an orange band	Marks 1, 2, 3, 4 - Pink cylindrical inflatable buoys Marks 1S & 2S – Orange & Yellow cylindrical inflatable buoys	Black and White Check cylindrical inflatable buoy.
<b>D</b>	Danbuoy displaying an Orange Flag with black S	Orange conical inflatable buoys	Danbuoy displaying an Orange Flag with black S