



Organising Authority
Adelaide Sailing Club
In conjunction with
Australian Sailing



Sailing Instructions

'[DP]' denotes a rule for which the penalty is at the discretion of the National Jury, and may be less than disqualification.

1. Rules

- 1.1 The Regatta will be governed by the rules as defined in The Racing Rules of Sailing.
- 1.2 The prescriptions of Australian Sailing and AS Special Regulations Part 2 for Off the Beach Boats will apply.
- 1.3 If there is a conflict between languages the English text will take precedence.

2. Notices to Competitors

- 2.1 Notices to competitors will be posted on the Official Notice Board located on the northern window of the upper level of Adelaide Sailing Club (ASC), and if possible, on the AYC regatta page at [Australian Youth Championships](#).

3. Changes to Sailing Instructions

Any change to the Sailing Instructions will be posted before 0900hrs on the day it will take effect, except that any change to the Schedule of Races will be posted by 2000hrs on the day before it will take effect.

4. Signals Made Ashore

4.1 Signals made ashore will be displayed from the flag mast located on the northern end of the upper level of the ASC club house.

4.2 When Flag 'AP' is displayed ashore, '1 minute' is replaced with 'not less than 30 minutes' in the race signal 'AP'.

4.3 Flag 'D' with one sound means 'The warning signal will be made not less than 30 minutes after Flag 'D' is displayed. No boat shall launch until this signal is made. [DP]'

5. Schedule

Date	Time	Event
Mon 9 Jan 2017	1300 - 1700	Early Registration and Measurement
Tue 10 Jan 2017	1000 - 1800	Registration and Measurement
	1400	Practice Race
	1800	Competitor Meeting
	1830	Welcome Function
Wed 11 Jan 2015	0930	Coach & Officials Meeting
	From 1000	Racing
	After Racing	Post-Race Debrief
Thu 12 Jan 2015	From 1200	Racing
	After Racing	Post-Race Debrief
Fri 13 Jan 2015	From 1000	Racing
	After Racing	Post-Race Debrief
Sat 14 Jan 2014	From 1000	Racing
	1500	No warning signal after this time
	1800	Presentation Ceremony
	After Presentation	Closing Social Function

5.1 Races are scheduled in accordance with Attachment 1. A maximum of 4 races for any class, in any racing session, may be run.

5.2 The scheduled time of the first warning signal for each session on each racing area each day is detailed in Attachment 1. The Warning Signals for subsequent races will be made as soon as practicable after the finish of the previous race.

5.3 On the last day of the regatta no warning signal will be made after 1500

5.4 Competitor safety and information briefing will be conducted on Tuesday, 10th January at 1800hrs.

6. Class Flags

Each Class Flag will be a flag showing the class insignia.

Class	Insignia	Background
Techno 293	Red/Black	White
Laser 4.7	Red	Yellow
Laser Radial	Red	Green
420	420	White
29er	29er	Red

7. Course Areas

- 7.1 Attachment 4 shows the approximate location of the racing areas.
- 7.2 The Committee Vessel on Course Area A will display a red flag with a black "A".
- 7.3 The Committee Vessel on Course Area B will display a green flag with a black "B".

8. Courses

- 8.1 The courses to be sailed, including the course designations, the order in which marks are to be passed and the side to which each mark is to be left are shown in Attachment 2.
- 8.2 The course to be sailed will be signaled by displaying the course designation detailed in Attachment 3 from the committee boat.

9. Marks

The Marks are described in Attachment 3.

10. The Start

- 10.1 The Starting Line will be between staffs displaying an orange flag on the Race Committee Start Vessel at the Starboard end and the Start Mark at the port end.
- 10.2 Boats whose warning signal has not been made shall keep clear of the starting area. [DP]
- 10.3 The Race Committee Vessels may hold position by using their engines. Any effects will not be grounds for granting redress. This changes RRS 60.1(b) and 62.
- 10.4 A boat starting later than 4 minutes after her Starting Signal will be scored DNS without a hearing. This changes rule A4 & A5.

11. Spare

12. Change of the Next Leg of the Course

To change the position of the next mark, the race committee will lay a new mark (or move the finishing line) and remove the original mark as soon as practicable. When in a subsequent change a new mark is replaced, it will be replaced by an original mark.

13. The Finish

- 13.1 The Finishing Line will be between masts displaying blue flags on Race Committee Vessels or finishing marks.

13.2 Boats finished are required to keep clear of boats still racing and the finish area. {DP}

14. Penalty System

14.1 Appendix P will apply as changed by instructions 14.2 and 14.3.

14.2 For the 29er and Techno 293 classes rule 44.1 is changed so that the Two Turns penalty is replaced by the One Turn Penalty.

14.3 Rule P2.3 will not apply and rule P2.2 is changed so that it will apply to any penalty after the first one.

15. Time Limits

15.1 The Time Limit for the first boat in each race is shown below.

Class	Target Time	First Mark Time Limit (Minutes)	Time Limit for each Race (Minutes)	Time after First Boat Finishes
420, Laser (all variants)	40	20	75	15
29er, Techno 293	30	15	50	15

15.2 Any boat failing to finish within the time specified in 15.1 after the first boat to finish in its race will be scored "Did Not Finish". This changes Rule 35, A4 and A5.

16. Protests

16.1 A National Jury has been appointed. In accordance with Rule 70.5 there is no appeal from the decisions of the Jury.

16.2 Protest forms are available at the Regatta Office at Adelaide Sailing Club. Protests and requests for redress or reopening shall be delivered there within the appropriate time limit.

16.3 For each class, the Protest Time Limit is 60 minutes after the last boat has finished the last race of the day or the race committee signals no more racing today, whichever is later. The same protest time limit applies to requests for redress. The Protest Time for each class will be posted on the Official Notice Board.

16.4 Notices will be posted as soon as possible after a protest has been lodged, but not later than 30 minutes after the end of Protest Time to inform competitors of hearings in which they are parties or named as witnesses.

16.5 The Protest Time Limit for all protests by the race committee will be 60 minutes after the finish of the last boat in the last race to be held on the relevant course area. This changes RRS 62.2.

16.6 A list of boats that, under instruction 14.1, have been penalized for breaking rule 42 will be posted.

16.7 It is intended that protests will be heard in the approximate order of receipt. Parties and witnesses are required to be in the vicinity of the Jury Room at Adelaide Sailing Club at the time stated on the Protest Schedule notice.

16.8 For the purpose of RRS 64.3(b) the 'authority responsible' is the Technical Committee as described in rule 92.

16.9 Infringements of Instructions 4.3, 10.2, 19, 22, 23, 24 and 25 shall not be grounds for protest by competitors. This alters RRS 60.1(a).

- 16.10 On the last scheduled day of racing a request for reopening a hearing shall be delivered,
- (a) within the time limit for protests if the party requesting reopening was informed of the decision on the previous day;
 - (b) no later than 30 minutes after the party requesting reopening was informed of the decision on that day. This changes RRS 66.

17. Arbitration

Post-Race Penalty

- 17.1 Provided that rule 44.1 (b) does not apply, a boat that may have broken one or more rules of Part 2, Part 4 or rule 31 in an incident may take a Post-Race Penalty at any time after the race until the beginning of a protest hearing involving the incident.
- 17.2 A Post-Race Penalty is a Scoring Penalty equal to a finishing place mid-way between the boat's actual finishing place and the score for a disqualification as stated in rule 44.3(c). Half points shall be disregarded.
- 17.3 A boat takes a Post-Race Penalty by informing the arbitrator or a member of the protest committee and signing the Post-Race Penalty form, declaring that she accepts the penalty and identifies the race number, and where and when the incident occurred.

Arbitration Meeting

- 17.4 An arbitration hearing will be held prior to a protest hearing for each incident resulting in a protest by a boat involving one or more rules of Part 2, Part 4 or rule 31, but only if each party is represented by a person who was on board at the time of the incident.
- 17.5 The time and place of the arbitration hearing will be decided by the arbitrator and such advice may be given verbally. No witnesses will be permitted. However, if the arbitrator decides that rule 44.1(b) may apply or that arbitration is not appropriate, the meeting will not be held, and if a meeting is in progress, it will be closed. The arbitrator will decide the manner in which testimony is given.
- 17.6 Based on the evidence given by the representatives, the arbitrator will offer an opinion as to what the protest committee is likely to decide:
- a) the protest is invalid,
 - b) no boat will be penalised for breaking a rule, or
 - c) one or more boats will be penalised for breaking a rule.
- 17.7 After the arbitrator offers an opinion,
- a) a boat may take a Post-Race Penalty, and
 - b) a boat may ask to withdraw her protest. The arbitrator may then act on behalf of the protest committee in accordance with rule 63.1 to allow the withdrawal.
- 17.8 Unless all protests involving the incident are withdrawn, a protest hearing will be held.
- 17.9 An arbitration hearing shall not be re-opened. No conclusion of an arbitrator shall be subject to appeal or be grounds for redress.
- 17.10 Should the protest proceed to a protest hearing then the arbitrator may be a member of the National Jury. Any evidence given by an arbitrator during a protest hearing shall be given only in the presence of the parties to the hearing.

18. Scoring

- 18.1 A minimum of three races will be required to constitute a series.
- 18.2 When fewer than five (5) races have been completed, a boat's score shall be the sum of the scores in all races.
- 18.3 When five (5) to eight (8) races have been completed, a boat's score shall be the sum of the scores for all races, excluding the worst score.
- 18.4 When nine (9) or ten (10) races have been completed, a boat's score shall be the sum of the scores for all races, excluding the worst two scores.
- 18.5 In the 29er and 420 classes Girls, Boys & Mixed fleets will be scored overall.
- 18.6 In the Laser 4.7, Laser Radial and Techno 293 Girls and Boys will be scored overall.

19. Sign on and Sign off

- 19.1 Before leaving the beach the skipper of each boat shall sign-on. The sign on/off desk will be located under the balcony of the ASC adjacent to the Official Notice Board.
- 19.2 The helm of each boat shall sign off within the protest time limit for their class and are encouraged to sign off promptly.
- 19.3 Boats failing to comply with instructions 19.1 and 19.2 shall receive a 5 point penalty in the race held closest to the indiscretion without a hearing. If a class has less than 10 competitors then the DP shall be 2 penalty points. No boat shall be scored worse than a DSQ. This changes Appendix A5.
- 19.4 Any boat that retires from a race shall notify the race committee as soon as possible. [DP]

20. Replacement of Crew or Equipment

- 20.1 Substitution of crew members will not be allowed without the prior written approval of the race committee. [DP]
- 20.2 Substitution of helms will not be allowed after close of Registration for the applicable class.
- 20.3 Substitution of damaged or lost equipment will not be allowed unless authorized in writing by the race committee.
- 20.4 When equipment is substituted during a series of races on the same day, the request shall be made before the protest time limit expires on that day. [DP]

21. Equipment and Measurement Checks

On the water, a boat can be instructed by a member of the race committee or the technical committee to proceed immediately to a designated area for inspection. Ashore, equipment may be inspected or measured at any time as required by the Technical Committee.

22. Advertising

Advertising will be in accordance with ISAF Regulation 20.

23. Official Boats

- 23.1 Official boats will be marked as follows:
 - (a) COURSE A – Red flag with a black letter “A”
 - (b) COURSE B – Green flag with a black letter “B”
- 23.2 Jury boats will be marked with a flag with a black letter “J”.
- 23.3 Media boat(s) will be marked with a flag with the word “Media”.

24 Coach and Support Boats

- 24.1 Coach boats shall stay outside areas where boats are racing from the time of the preparatory signal for the first fleet to start until all boats have finished or retired or the race committee signals a postponement, general recall or abandonment. Such restricted areas are defined as follows: not closer than 50 metres to any boat racing (except a boat in distress requiring assistance) or to a mark, layline or rhumbline, and inside the course trapezoid. Until the starting signal, coach boats shall be at least 100 metres to leeward of the starting line or its extensions. See diagrams in Attachment 3. They shall not communicate with boats while racing, except in case of emergency. If a support boat, when it is inside the restricted area, fails to keep clear and to leeward of all boats while racing, she may be excluded from the restricted area by the Race Committee without prior warning and without a hearing for the remaining part of the race in progress and/or for the subsequent race(s). The Race Committee may request the jury to conduct a hearing to investigate any alleged breach of instruction 24 and the jury may apply a penalty to any competing boat associated with the offending support boat
- 24.2 Should there be a long postponement the Race Committee will lower the orange flag, support boats may re-enter the restricted area and resume communication with the boats. Support boats shall stay outside the restricted area at all times when boats are racing.
- 24.3 Support boats are permitted to navigate from the start area to mark 1 area, on a trapezoid course outside the restricted area on Attachment 4 after the first class has started and the boats are approximately a quarter of the way up the first leg of the course. They shall navigate at a distance of at least 100 meters from the restricted area as defined in the Attachment 3, or 100 meters from any racing boat, whichever is farther away.
- 24.4 Coach and Support boats shall register at the Race Office prior to the first scheduled race of the series, providing details of their boats.
- 24.5 Support boats shall not enter the restricted area during the racing unless given prior approval by the Race Committee in charge of the respective race area. Such approval will be for one day at a time and may be cancelled by the Race Committee at its discretion at any time.
- 24.6 Coach and Support boats while afloat must display numbered identification supplied by the Organising Authority. This identification is obtained upon registration. [DP]
- 24.7 If flag V is displayed by the Race Committee, and accompanied by a VHF broadcast, all Coach boats must become rescue boats and may enter the course area. No coach boat is to leave the water until all sailors are accounted for and directed by the Race Committee.

25 Radio Communication

A boat shall neither make radio transmissions nor receive radio communications while racing. This restriction also applies to mobile telephones. [DP]

26 Prizes

- 26.1 Medals will be awarded to the crews as listed below. Additional prizes may be awarded at the discretion of the Organising Authority.
- 1st place in each division will receive the perpetual Australian Sailing Trophy
- 1st to 3rd in each division will receive medals.

- 26.2 Presentations of prizes will be held at Adelaide Sailing Club on Saturday 14th January at 1800 or, if later, as soon as possible after the completion of racing on that day. All competitors are requested to attend the presentation of prizes.

27. Disclaimer of Liability

Competitors participate in the Regatta entirely at their own risk. See rule 4, Decision to Race. The Organising Authority will not accept any liability for material damage or personal injury or death sustained in conjunction with or prior to, during, or after the Regatta. Attention is drawn to clauses 15 and 16 of the Notice of Race.

28. Insurance

- 28.1 Each participating boat shall present a valid insurance certificate showing proof of third-party liability coverage of at least AUD \$5,000,000 (recommended \$10,000,000) (or equivalent) per incident.
- 28.2 Competitors will be required to supply insurance details as part of the online entry. Any competitor not holding this cover shall withdraw their entry.

ATTACHMENT 1

SCHEDULE OF RACES AND COURSE ALLOCATIONS:

NOTE: This Schedule may be varied prior to commencement of the Regatta or daily. Competitors are advised to check the official Notice Board or Website for any amendments.

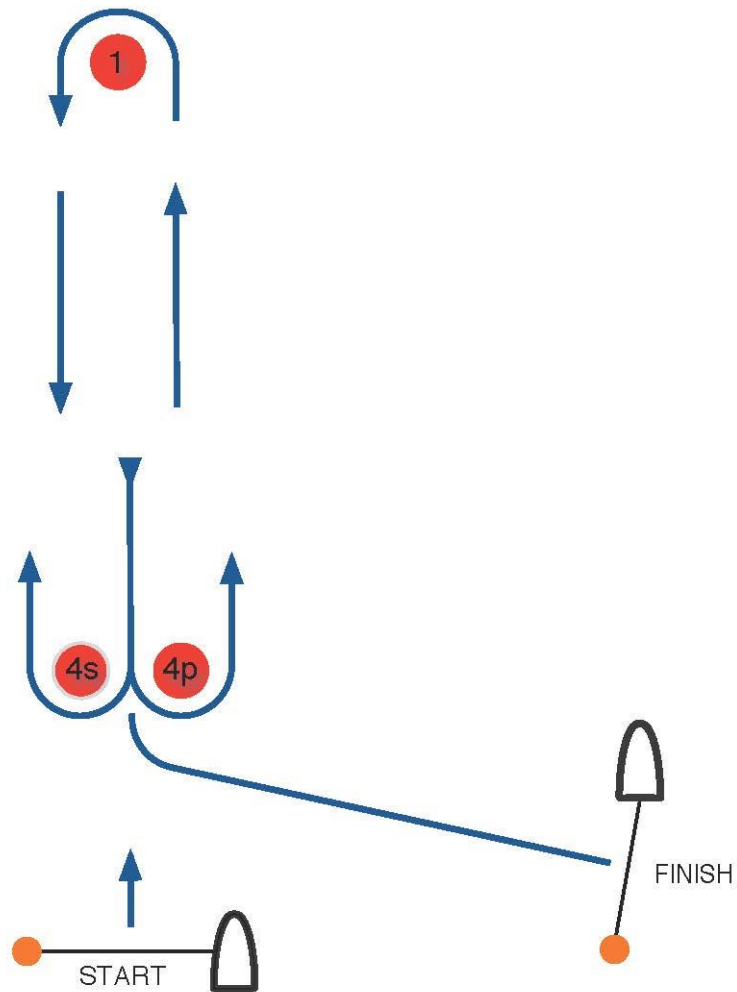
CLASS		Tuesday 10 th Jan	Wednesday 11 th Jan	Thursday 12 th Jan	Friday 13 th Jan	Saturday 14 th Jan
29er	Course	A	A	A	A	A
	Warning Signal	1400hrs	1200hrs	1200hrs	1200hrs	1100hrs
420	Course	A	A	A	A	A
	Warning Signal	1400hrs	1200hrs	1200hrs	1200hrs	1100hrs
Laser Radial	Course	B	B	B	B	B
	Warning Signal	1400hrs	1200hrs	1200hrs	1200hrs	1100hrs
Laser 4.7	Course	B	B	B	B	B
	Warning Signal	1400hrs	1200hrs	1200hrs	1200hrs	1100hrs
Techno 293	Course	A	A	A	A	A
	Warning Signal	1500hrs	1000hrs	1400hrs	1000hrs	1000hrs

The Race Committee may conduct up to 4 races for each class per session.

ATTACHMENT 2

COURSES

LR



Course Designation	Course Description
LR	Start - 1 - 4p - Finish
LR2	Start - 1 - 4s/4p - 1 - 4p - Finish
LR3	Start - 1 - 4s/4p - 1 - 4s/4p - 1 - 4p - Finish

ATTACHMENT 3

COURSE and MARK ALLOCATIONS

Marks will be as per the following table

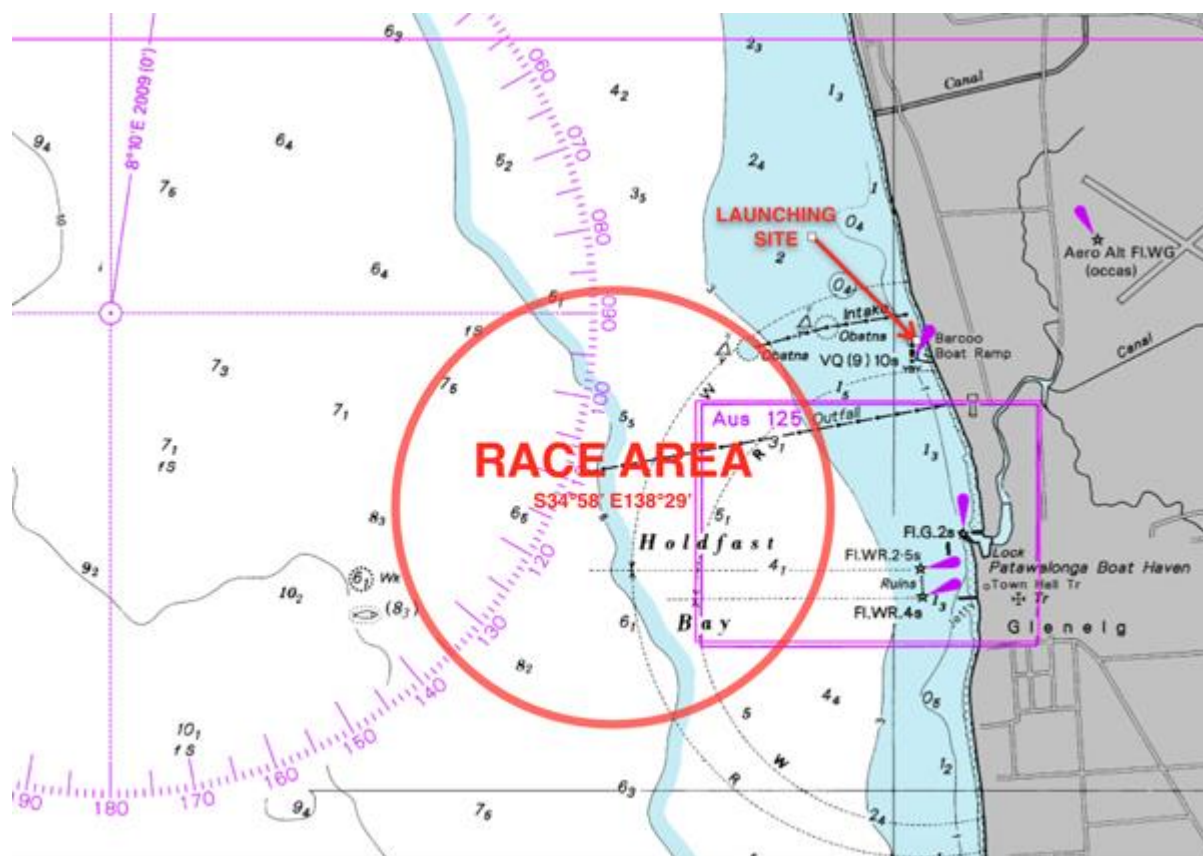
FLEET	COURSE	MARK 1	MARK 4S, 4P	REPLACEMENT
420	A	Orange	Red	Yellow
29er	A	Blue	Red	Orange / Green
Radial	B	Orange	Yellow	Orange / Green
4.7	B	Blue	Yellow	Red

The starting marks will be a race committee signal boat flying an orange flag at the starboard end and either a race committee boat displaying an orange flag or a staff mark displaying an orange flag at the port end.

The finishing marks will be a race committee boat flying a blue flag at one end and a committee boat displaying a blue flag or a staff mark displaying a blue flag at the other end.

ATTACHMENT 4

Course location



ATTACHMENT 5

RESTRICTED AREA DEFINITION FOR APPLICATION OF INSTRUCTION

The "restricted area" as mentioned in instruction 24 consists of any area within the perimeter illustrated here below (dotted lines).

Windward-leeward course

