



2017 City of Rockingham WA Youth Championships 27 – 28 September 2017

Sailing Instructions (SI)

Organising Authority is The Cruising Yacht Club of WA Inc (TCYC)
in conjunction with Australian Sailing Ltd (AS)



[DP] denotes a rule for which the penalty is at the discretion of the protest committee.

[NP] denotes that a breach of this rule will not be grounds for a protest by a boat.

[SP] denotes a rule for which a standard penalty may be applied by the race committee without a hearing

1 Rules

- 1.1 The regatta will be governed by the rules as defined in *The Racing Rules of Sailing* (RRS).
- 1.2 The Australian Sailing Prescriptions will apply.
- 1.3 [SP] Australian Sailing Special Regulation Part 2 Off the Beach Boats will apply. It is the responsibility of all competitors to ensure that the personal flotation devices comply with a standard equivalent to those listed in the regulations.
- 1.4 The Optimist Green Fleet will be governed by the World Sailing Introductory Rules of Sailing.
- 1.5 Appendix T – Arbitration shall apply.

2 Notices to Competitors

Notices to competitors will be posted online and on the Official Notice Board, located next to the regatta office.

3 Changes to Sailing Instructions

- 3.1 Any change to the sailing instructions will be posted before 0830 on the day it will take effect, except that any change to the schedule of races will be posted by 1800 on the day before it will take effect.
- 3.2 When any SI Attachment is changed, an updated version of it will be posted online and on the Official Notice Board.

4 Signals Made a Shore

- 4.1 Signals made ashore will be displayed at the flag mast located in the TCYC Boat Park.
- 4.2 When flag AP is displayed ashore, '1 minute' is replaced with 'not less than 15 minutes' in the race signal AP.
- 4.3 [DP] [NP] Flag AP over H displayed ashore means 'Boats shall not leave the beach. Wait for further instructions.' AP over H may be displayed either alone applying to all boats, or over specific class flags in which case this instruction is specific only to those classes. This adds to Race Signals.

5 Schedule of Races

- 5.1 The racing schedule will be as follows:

Date	Time	
Wednesday 27 September	0845 to 1700	Registration/Regatta Office
	0915 to 0945	Competitor and Support Boats Briefing on the northern side of the club
	1030	Racing – Time of 1 st warning signal
Thursday 28 September	0845 to 1700	Regatta Office
	0815 to 0830	Briefing
	0930	Racing – Time of 1 st warning signal Presentations after racing

- 5.2 The total number of races scheduled is as per the NoR.
- 5.3 More than one race will be held each day with morning and afternoon sessions. The warning signal for each succeeding race in a session will be made as soon as practicable. To alert boats that a race or sequence of races will begin soon, the orange starting line flag will be displayed with one sound at least five minutes before a warning signal is made.
- 5.4 On the last scheduled day of racing no warning signal will be made after 1530.

6 Class Flags

Class flags will be the class insignia on the following background.

Class	Class Insignia	Background Colour
420	White 420	blue & red background
Laser Radial	Red Laser	green background
Laser 4.7	Red Laser	yellow background
Flying Ant	Black A with wings	white background
Open Bic	Open Bic	white background
Optimist Open	Optimist	white background
Optimist Intermediate	Optimist	green background
Optimist Green	Optimist	yellow flag
Pelican	Black Pelican	white background
Minnow	Black Minnow	blue background
29er	Red 29er	white background

7 Racing Areas

Attachment A shows the location of the racing areas.

8 The Courses

- 8.1 The diagrams in Attachment B show the courses, including the approximate angles between legs, the order in which marks are to be passed, and the side on which each mark is to be left.
- 8.2 Legs of the course will not be changed after the preparatory signal. This changes RRS 33.

9 Marks

9.1 Race Area 1

- (a) Marks 1, 2, 3s, 3p, 4s, 4p and 5 will be green inflatable buoys.
- (b) Mark 2a will be an orange inflatable buoy.
- (c) The starting and finishing marks will be a race committee vessel at the starboard end and a buoy displaying an orange flag at the port end.

9.2 Race Area 2

- (a) Marks 1, 2 and 5 will be orange inflatable buoys.
- (b) Marks 3s, 3p, 4s and 4p will be yellow inflatable buoys.
- (c) The starting and finishing marks will be a race committee vessel at the starboard end and a buoy displaying an orange flag at the port end.

9.3 Race Area 3

- (a) Mark 1 will be a yellow inflatable buoy.
- (b) Marks 2, 3s and 3p will be pink inflatable buoys.
- (c) The starting marks will be a race committee vessel at the starboard end and a buoy displaying an orange flag at the port end.
- (d) The finishing marks will be a race committee vessel at the port end and a buoy displaying an orange flag at the starboard end.

9.4 Race Area 4

- (a) The starting and finishing marks will be a race committee vessel at the starboard end and a buoy with a flag at the port end.
- (b) All other marks will be a buoy with a flag.

10 The Start

- 10.1 The starting line will be between a staff displaying an orange flag on the race committee vessel at the starboard end and the port end starting mark.
- 10.2 A buoy will be attached to the race committee starting vessel. Boats shall not pass between this buoy and the race committee starting vessel at any time.
- 10.3 [DP] [NP] [SP] Boats whose warning signal has not been made shall avoid the starting area during the starting sequence for other races.
- 10.4 A boat that does not start within 4 minutes after her starting signal will be scored Did Not Start without a hearing. This changes RRS A4 and A5.

11 The Finish

- 11.1 Race Areas 1, 2 and 4
The finishing line will be between a staff displaying a blue flag on the race committee vessel at the starboard end and the port end finishing mark.
- 11.2 Race Area 3
The finishing line will be between a staff displaying a blue flag on the race committee vessel at the port end and the starboard end finishing mark.

12 Penalty System

- 12.1 For all classes RRS 44.1 and RRS P2.1 are changed so that the Two-Turns Penalty is replaced by the One-Turn Penalty.
- 12.2 Appendix P will apply as changed by the SI's.
- 12.3 RRS P2.3 will not apply and RRS P2.2 is changed so that it will apply to any penalty after the first one.

13 Time Limits and Target Times

- 13.1 Time limits and target times are as follows:

Time Limit	Mark 1 Time Limit	Finish Window	Target Time
60	20	15	35

- 13.2 If no boat has passed Mark 1 within the Mark 1 Time Limit the race will be abandoned.
- 13.3 Failure to meet the target times will not be grounds for redress. This changes RRS 35, 62.1(a), A4 and A5.

- 13.4 Boats failing to finish within the time stated in the Finish Window, after the first boat in their class sails the course and finishes, will be scored Did Not Finish. This changes RRS 35, A4 and A5.

14 Protests and Requests for Redress

- 14.1 Protest forms are available at the regatta office. Protests and requests for redress or reopening shall be delivered there within the appropriate time limit.
- 14.2 For each racing area, the protest time limit is 45 minutes after the last boat has finished the last race of the session or the race committee signals no more racing for that session, whichever is later.
- 14.3 Notices will be posted no later than 30 minutes after the protest time limit to inform competitors of hearings in which they are parties or named as witnesses. Hearings will be held in the protest room, located at TCYC beginning at the time posted.
- 14.4 Notices of protests by the race committee, technical committee or protest committee will be posted to inform boats under RRS 61.1(b).
- 14.5 A list of boats that under SI 12.2 have been penalised for breaking RRS 42 will be posted.
- 14.6 On the last scheduled day of racing, a request for redress based on a protest committee decision shall be delivered no later than 30 minutes after the decision was posted. This changes RRS 62.2.

15 Scoring

- 15.1 Three races are required to be completed to constitute a series.
- 15.2 When fewer than six races have been completed, a boat's series score will be the total of her race scores.
- 15.3 When from six to eight races have been completed, a boat's series score will be the total of her race scores excluding her worst score.
- 15.4 When nine or more races have been completed, a boat's series score will be the total of her race scores excluding her two worst scores.
- 15.5 To request correction of an alleged error in posted race or series results, a boat may complete a scoring enquiry form available at and to be submitted to the regatta office.

16 Safety Regulations

- 16.1 [DP] [NP] Boats not leaving the beach for a scheduled race shall promptly notify the regatta office.
- 16.2 [NP] Before leaving to race for each scheduled racing session, a crew shall personally sign-on on the required race committee form located near the regatta office. Failure to sign-on will result in that boat being penalised five (5) points (but not worse than DNF) for the first race in the session. This changes RRS 63.1 and A5.
- 16.3 [NP] Within protest time limits after returning ashore, a crew shall personally sign-off on the required form. Failure to sign-off will result in that boat being penalised five (5) points (but not worse than DNF) for the last race in the session. This changes RRS 63.1 and A5.
- 16.4 [NP] [SP] A boat that retires from racing shall notify the race committee before leaving the racing area, or, if that is not possible, shall notify the regatta office as soon as possible after returning ashore and shall complete a retirement declaration form at the regatta office before the expiry of the protest time limit.
- 16.5 [NP] [SP] Boats shall not sail into other race areas whilst the other race areas are racing. Boats not racing shall remain clear of boats that are racing and official boats.

17 [DP] [NP] Replacement of Crew or Equipment

- 17.1 Substitution of competitors will not be allowed without prior written approval of the race committee.
- 17.2 Substitution of damaged or lost equipment will not be allowed unless authorised by the race committee. Requests for substitution shall be:
 - (a) made in writing on the appropriate form collected from the regatta office, and
 - (b) submitted to the race committee at the first reasonable opportunity.

18 [DP] Equipment and Measurement Checks

Equipment may be inspected at any time for compliance with the class rules and sailing instructions. When instructed by the technical committee or the principal race officer, a boat shall proceed immediately to a designated area for inspection.

19 [DP] [NP] Event Advertising

Boats may be required to display event advertising. The organising authority will supply the advertising and instructions for their use.

20 [DP] Support Boats

- 20.1 All private support boats shall be registered with the organising authority and will be required to comply with local legislation and event support boat regulations. Local marine regulations specify the safety equipment to be carried and conditions under which life jackets are to be worn. A copy of the regulations is available at [safety-equipment-for-powered-vessels](#) and [personal-flotation-devices](#).
- 20.2 All support boats shall keep to leeward of the start line and its extensions between the preparatory signal and the start signals and more than 50 metres clear of any competing boat or mark of the course, between the start signals and the finish of the last boat, except when asked to assist by the race committee.
- 20.3 When the race committee displays code flag "V" with repetitive sounds, all official and support boats shall monitor the race committee radio channel for search and rescue instructions.

21 [DP] Radio Communication

Except in an emergency, a boat shall neither make nor receive radio transmissions, text messages or cellular phone calls while racing except in an emergency or when using equipment provided by the race committee.

22 Prizes

- 22.1 Prizes will be awarded for the first three placed boats in each event.
- 22.2 Other prizes will be awarded at the discretion of the organising authority.

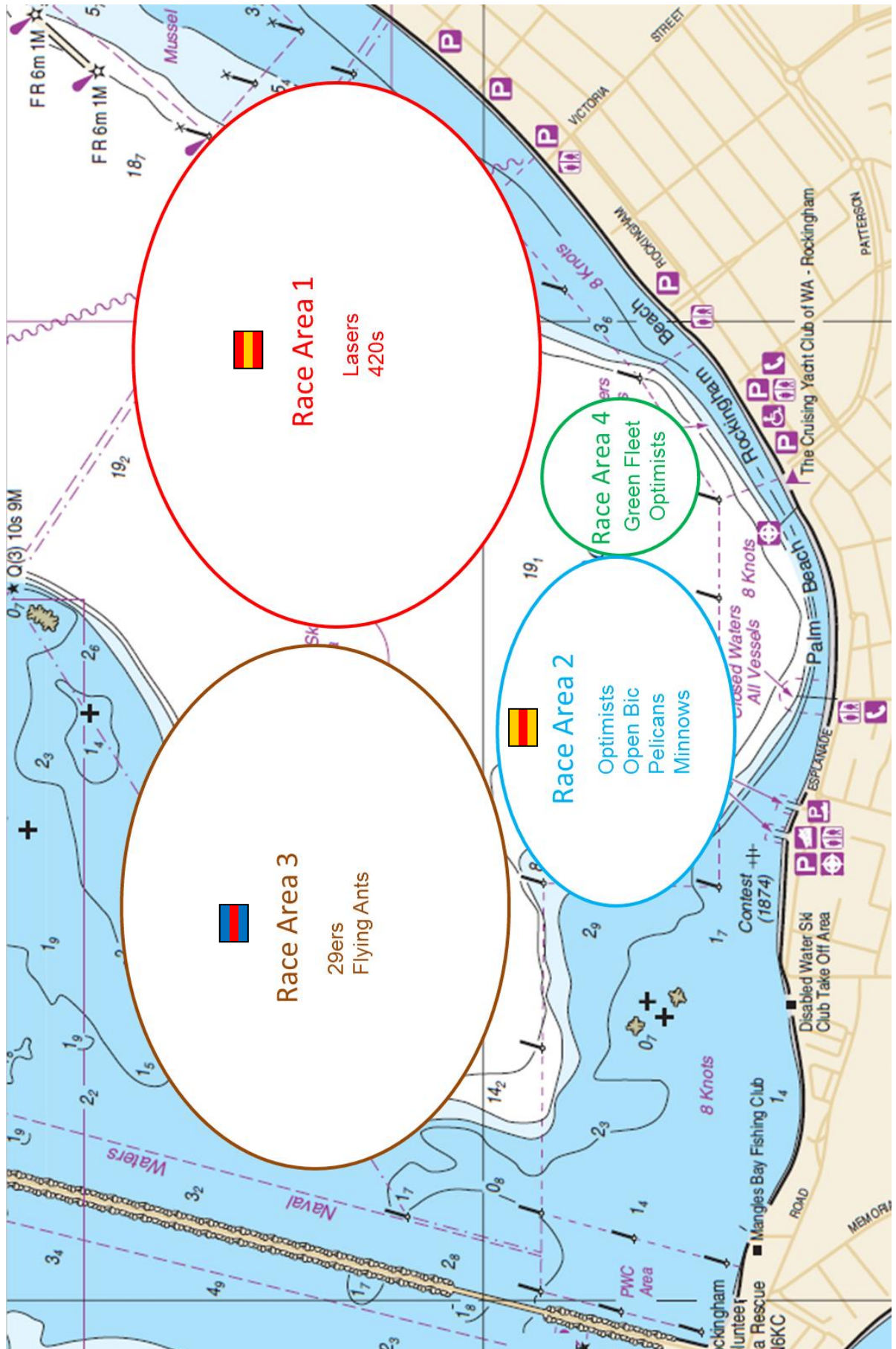
23 Disclaimer of Liability

Competitors participate in the regatta entirely at their own risk. See RRS 4, Decision to Race. The organising authority will not accept any liability for material damage or personal injury or death sustained in conjunction with or prior to, during, or after the regatta.

24 Insurance

Each competing boat shall be insured with valid third-party liability insurance with a minimum cover of \$5,000,000 per incident or the equivalent.

Attachment A - RACING AREAS



Attachment B - COURSES

Race Area 1

Laser 4.7 Course

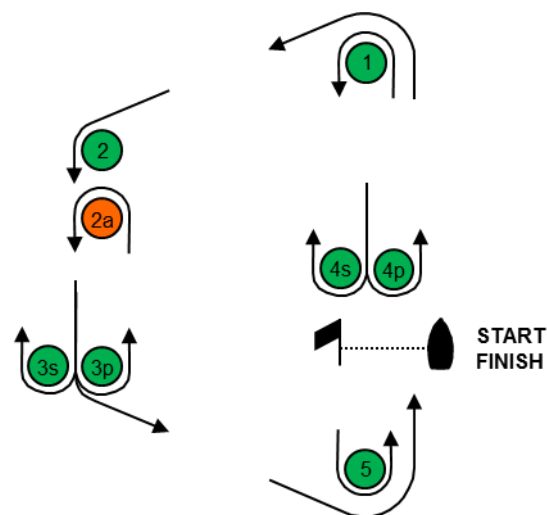
Start - 1 - 2 - 3s/3p - 2a - 3p - 5 - Finish

Laser Radial Course

Start - 1 - 2 - 3s/3p - 2 - 3p - 5 - Finish

420 Course

Start - 1 - 4s/4p - 1 - 2 - 3p - 5 - Finish



Race Area 2

Optimist Open Course

Start - 1 - 2 - 3s/3p - 2 - 3p - 5 - Finish

Optimist Intermediate Course

Start - 1 - 2 - 3p - 5 - Finish

Open Bic Course

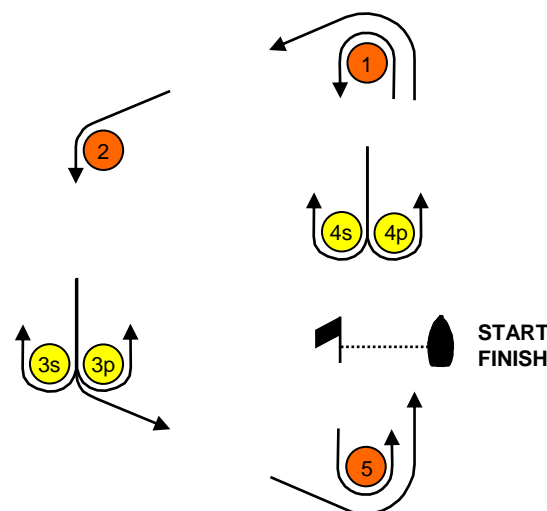
Start - 1 - 4s/4p - 1 - 2 - 3p - 5 - Finish

Minnow Course

Start - 1 - 4s/4p - 1 - 2 - 3p - 5 - Finish

Pelican Course

Start - 1 - 4s/4p - 1 - 2 - 3p - 5 - Finish



Race Area 3

29er Course

Start - 2 - 3s/3p - 2 - Finish

Flying Ant

Start - 1 - 3s/3p - 1 - Finish



Race Area 4

Optimist Green

Course to be decided by the PRO and RO on the day.

