



2018 Australian Youth Championships

Incorporating the Nacra 15 Oceania and the Bic Techno 293 Oceania Continental Championships

11-15 January, 2018

Sailing Instructions

Organising Authority Royal Queensland Yacht Squadron Ltd on behalf of Australian Sailing



Sailing Instructions

[DP] denotes a rule for which the penalty is at the discretion of the Jury. This changes RRS 64.1.

[NP] denotes that a breach of this rule shall not be grounds for protest by a boat, but may result in a protest by the Race Committee, Technical Committee or Protest Committee. This changes RRS 60.1(a).

[SP] denotes a rule for which a standard penalty may be applied by the race committee without a hearing. This changes RRS 63.1, Appendix A4 and Appendix A5.

1. Rules

- 1.1 The Regatta will be governed by the rules as defined in The Racing Rules of Sailing.
- 1.2 The prescriptions of Australian Sailing and AS Special Regulations Part 2 for Off the Beach Boats. Flotation devices shall comply with a standard equivalent to those listed in AS Special Regulations 5.01 Personal Flotation Devices.
- 1.3 The Special Procedures for RRS 42 (Appendix P) will apply.
- 1.4 The Windsurfing Competition Rules (Appendix B) as amended by these Sailing Instructions will apply to the Techno classes.
- 1.5 The relevant World Sailing class rules shall apply to all other classes.
- 1.6 If there is a conflict between languages the English text will take precedence.

2. Official Notice Board and Notices to Competitors

- 2.1 The Official Notice Board includes the notice board located outside the RQYS Sailing Office, and the AYC regatta website at www.youthchamps.yachting.org.au
- 2.2 Notices to competitors will be posted on the Official Notice Board.

3. Changes to Sailing Instructions

- 3.1 Changes to the Sailing Instructions will be posted on the Official Notice Board before 0900hrs on the day it will take effect, except that any change to the Schedule of Races will be posted by 2000hrs on the day before it will take effect.

4. Signals Made Ashore

- 4.1 Signals made ashore will be displayed on the flag pole located adjacent to the RQYS club house.
- 4.2 When Flag AP is displayed ashore, "1 minute" is replaced with "not less than 45 minutes". This amends RRS Race Signal AP.
- 4.3 [NP][DP]Code Flag D with one sound means "The warning signal will be made not less than 30 minutes after Flag D is displayed". Boat shall not launch before this signal is made.

5. Schedule

Date	Time	Event
Wed 10 Jan 2018	1300 - 1700	Early Registration and Measurement
Thu 11 Jan 2018	1000 - 1800	Registration and Measurement

	1400	Practice Race
	1800	Competitor Meeting
	1830	Welcome Function
Fri 12 Jan 2018	0930 From 1100	Coach & Officials Meeting Racing
Sat 13 Jan 2018	From 1100	Racing
Sun 14 Jan 2018	From 1100	Racing
Mon 15 Jan 2018	From 1100	Racing
	1500	No warning signal after this time
	1800	Presentation Ceremony
	After Presentation	Closing Social Function

- 5.1 Races will be scheduled in accordance with Attachment 1. There will be a maximum of 4 races for a class in a racing session.
- 5.2 The scheduled time of the first warning signal for each session on each racing area each day is detailed in Attachment 1. The Warning Signals for subsequent races will be made as soon as practicable after the finish of the previous race.
- 5.3 [NP] On the last day of the regatta no warning signal will be made after 1500
- 5.4 Competitor safety and information briefing will be conducted on Wednesday, 10th January at 1800hrs at the RQYS Auditorium.

6. Class Flags

Each Class Flag will be a flag showing the class insignia.

Class	Insignia	Background
Techno 293 Plus	Techno 293	White
Techno 293	Techno 293	Pink
Nacra 15	N15	White
Laser 4.7	Laser	Yellow
Laser Radial	Laser	Green
420	420	White
29er	Red	White

7. Course Areas

- 7.1 Attachment 4 shows the approximate location of the racing areas.
- 7.2 The Committee Vessel on Course Area A will display a White flag with a black "A".
- 7.3 The Committee Vessel on Course Area B will display a White flag with a black "B".
- 7.4 The Committee Vessel on Course Area C will display a White flag with a black "C".

8. Courses

- 8.1 The courses to be sailed, including the course designations, the order in which marks are to be passed and the side to which each mark is to be left are shown in Attachment 2.
- 8.2 The course to be sailed will be signaled by displaying the course designation from the committee boat.

9. Marks

- 9.1 The Marks are described in Attachment 3.

10. The Start

- 10.1 The Starting Line will be between a staff displaying an orange flag on the Race Committee Start Vessel at the starboard end and either a race committee boat displaying an orange flag or an orange mark at the port end)
- 10.2 [NP][DP] Boats whose warning signal has not been made shall keep clear of the starting area.
- 10.3 [NP] The Race Committee Vessels may hold position by using their engines. Any effects will not be grounds for redress.
- 10.4 [SP] A boat starting later than 4 minutes after her Starting Signal will be scored DNS without a hearing.

11. Change of the Next Leg of the Course

- 11.1 To change the position of the next mark, the race committee will lay a new mark (or move the finishing line) and remove the original mark as soon as practicable. When in a subsequent change a new mark is replaced, it will be replaced by an original mark. The change mark will be a yellow inflatable.

12. The Finish

- 12.1 The Finishing Line will be between a staff displaying a blue flag on the Race Committee Vessel at the starboard end and a black and white mark at the port end.
- 12.2 [DP] Boats finished shall keep clear of boats still racing and the finish area.

13. Penalty System

- 13.1 Appendix P will apply as changed by instructions 13.2 and 13.3.
- 13.2 For the Nacra 15, 29er and Bic Techno 293 classes rule 44.1 is changed so that the Two Turns penalty is replaced by the One Turn Penalty.
- 13.3 Rule P2.3 will not apply and rule P2.2 is changed so that it will apply to any penalty after the first one.
- 13.4 In RRS 44.2 insert after the first sentence:

However, if Mark 1a is set, a boat may delay taking a penalty for an incident in the zone around Mark 1 or on the leg between Mark 1 and Mark 1a, until she has passed Mark 1a.

- 13.5 RRS 44.3(c) is deleted and replaced with:

The race score for a boat that takes a Scoring Penalty shall be the score she would have received without that penalty, made worse by adding the number of places equal to 30% of the difference between her finishing position score and the score for Did Not Finish rounded to the nearest whole number (0.5 rounded upward). The scores of other boats shall not be

changed; therefore, two boats may receive the same score. However, the penalty shall not cause the boat's score to be worse than the score for Did Not Finish.

14. Time Limits

14.1 The Time Limit for the first boat in each race is shown below.

Class	Target Time	First Mark Time Limit (Minutes)	Time Limit for each Race (Minutes)	Time after First Boat Finishes
420, Laser (all variants)	45	20	75	15
29er	30	15	50	15
Bic Techno 293	15	10	25	15
Nacra 15	25	12	45	15

14.2 [SP] A boat failing to finish within the time specified in 14.1 Time After First Boat Finishes in its class will be scored "Did Not Finish".

14.3 If no boat has rounded the first mark within the First Mark Time Limit the race shall be abandoned.

15. Protests

15.1 An International Jury has been appointed. In accordance with Rule 70.5 there is no appeal from the decisions of the International Jury.

15.2 Protest forms are available at the RQYS Sailing Office.

15.3 Protests and requests for redress or reopening shall be delivered to the RQYS Sailing Office within the Protest Time Limit.

15.4 For each class, the Protest Time Limit is 60 minutes after the last boat has finished the last race of the day or the race committee signals no more racing today, whichever is later. The same protest time limit applies to requests for redress. The Protest Time for each class will be posted on the Official Notice Board. This changes RRS 61.3 and 62.2.

15.5 A Hearing Schedule will be posted on the Official Notice Board as soon as possible after a protest has been lodged, but not later than 30 minutes after the Protest Time Limit to inform competitors of hearings in which they are parties or named as witnesses. Parties and witnesses are required to be in the vicinity of the Jury Room at RQYS at the time stated on the Hearing Schedule. It is the responsibility of each party to ensure their witnesses are present.

15.6 Protests hearings may be scheduled prior to the close of Protest Time.

15.7 The Protest Time Limit for all protests by the race committee will be 60 minutes after the finish of the last boat in the last race to be held on the relevant course area. This changes RRS 61.3.

15.8 The jury may impose a penalty other than DSQ. This amends RRS 64.1.

15.9 A list of boats which have been penalized for breaking rule 42 will be posted on the Official Notice Board.

15.10 For the purpose of RRS 64.3(b) the “authority responsible” is the Technical Committee as described in RRS 92.

15.11 On the last scheduled day of racing a request for reopening a hearing shall be delivered,

- (a) within the time limit for protests if the party requesting reopening was informed of the decision on the previous day;
- (b) no later than 30 minutes after the party requesting reopening was informed of the decision on that day.

This changes RRS 66.

16. Arbitration

16.1 Protests lodged in accordance with these Sailing Instructions may be subject to an Arbitration Hearings in accordance with RRS Appendix T.

16.2 RRS Appendix T.1(b) is deleted and replaced with

A Post-Race Penalty is a 30% Scoring Penalty calculated as stated in SI 13.5. However, rule 44.1(a) applies.

16.3 Arbitration hearings will be held subsequent to the protest being lodged and prior to a protest hearing.

16.4 Arbitration hearings will be conducted in accordance with RRS Appendix T.

17. Scoring

17.1 A minimum of three races will be required to constitute a series.

17.2 The regatta will consist of up to ten (10) races for the Techno 293, Techno 293+, Laser 4.7, Laser Radial, and 420. For the 29er and Nacra 15 up to twelve (12) races

17.3 When fewer than five (5) races have been completed, a boat's score shall be the total of the scores in all races. This amends A2.1.

17.4 When five (5) to eight (8) races have been completed, a boat's score shall be the total of the scores for all races, excluding the worst score. This amends A2.1

17.5 When nine (9) or more races have been completed, a boat's score shall be the total of the scores for all races, excluding the worst two (2) scores. This amends A2.1

17.6 In the Nacra 15, 29er and 420 classes, Girls, Boys & Mixed fleets will be scored overall.

17.7 In the Laser 4.7, Laser Radial and Bic Techno 293 Plus and Bic Techno 293, Girls and Boys will be scored overall.

18. [DP][NP][SP] Sign on and Sign off

18.1 Before leaving the beach the skipper of a boat shall sign-on. The sign on/off desk will be located on the verandah of the Sailing Office.

18.2 As soon as possible after returning to shore at the end of racing, the skipper of a boat shall sign off within the protest time limit for their class.

18.3 Boats failing to comply with instructions 18.1 or 18.2 shall receive a five (5) point penalty without a hearing. If a class has less than ten (10) competitors then the penalty shall be two (2) penalty points. No boat shall be scored worse than a DSQ.

18.4 For failing to comply with 18.1, the penalty will be applied to the first race of the session. For failing to comply with 18.2, the penalty will be applied to the last race of the session.

18.5 Any boat that retires from a race shall notify the race committee as soon as possible.

19. [NP][DP] Replacement of Crew or Equipment

- 19.1 Substitution of crew members will not be allowed without the prior written approval of the technical committee.
- 19.2 Substitution of skipper will not be allowed after close of Registration for the applicable class.
- 19.3 Substitution of damaged or lost equipment will not be allowed without the prior written approval of the technical committee.
- 19.4 When equipment is substituted during a series of races on the same day, the request shall be made before the protest time limit expires on that day.

20. [NP][DP] Equipment and Measurement Checks

- 20.1 On the water, a boat may be instructed by a member of the race committee or the technical committee to proceed immediately to a designated area for inspection. Ashore, equipment may be inspected or measured at any time as required by the Technical Committee.

21. [NP] Advertising

- 21.1 Advertising will be in accordance with ISAF Regulation 20.
- 21.2 Boats may be required to display bow numbers and / or advertising chosen and supplied by the Organising Authority.
- 21.3 The Organising Authority reserves the right to refuse advertising by a boat or competitor when it is in conflict with the laws of the Queensland and / or Australian governments.

22. [NP] Official Boats

- 22.1 Official boats will be marked as follows:

Equipment Inspection	Flag with letter M
Judges and Umpires	White Flag with letter J
Media	Flag with letters Media
Race Committee	Flag with letter referring to course team "A" "B" "C"
VIP	Flag with letters VIP
PRO	Flag with letters PRO

23. [NP][DP] Coach and Support Boats

- 23.1 Coaches and support boats are reminded of their obligations under RRS 3.1(b)
- 23.2 Except when asked to assist by the Race Committee, team leaders, coaches and other support personnel ("Support Boats") shall not enter a Restricted Area.
- 23.3 Support Boats shall comply with any direction given to them by the Race Committee or Jury.
- 23.4 Restricted Areas apply from the first Preparatory Signal to when then last boat in the last class on that course area is no longer racing; or, the Race Committee signals a postponement or general recall.
- 23.5 Restricted Areas are defined as the greater of:
- 100m from any boat racing, a mark, layline or rhumbline; or,

- 100m from the boundary of a restricted area defined in Attachment 4 ; or
 - Prior to the starting signal, 100m from either of the starting marks; or,
 - Within the perimeter of the areas described in Attachment 4.
- 23.6 Prior to the first scheduled race of the series Support boats shall register online and attend the registration desk to collect their identification sticker and provide details of their boats.
- 23.7 Support boats shall display numbered identification supplied by the Organising Authority at all times during the regatta.
- 23.8 Support Boats shall carry a working VHF radio, capable of communicating on VHF channels 16 and 69, 71,73 and 77. While afloat Support Boats shall maintain a listening watch on VHF 16 and 73.
- 23.9 If Code Flag V is displayed or the Race Committee otherwise indicates an emergency situation:
- All Support boats shall become rescue boats and may enter the course area; and,
 - Support boats shall follow the directions of the Race Committee; and,
 - Support boats shall not leave the course area until directed by the Race Committee.
- 23.10 Support Boats must comply at all times with local maritime navigation and safety regulations.
- 23.11 Support Boats shall not communicate with competitors while racing, except in case of emergency.
- 23.12 The Race Committee may request the jury under RRS 60.3(d) to call a hearing to consider any alleged breach of instruction 23 and the jury may apply a penalty in accordance with RRS 64.4.

24. [NP] Radio Communication

- 24.1 A boat shall neither make radio transmissions nor receive radio communications while racing. This restriction also applies to mobile telephones. [DP]

25. [NP] Prizes

- 25.1 Medals will be awarded to the crews as listed below. Additional prizes may be awarded at the discretion of the Organising Authority.
- 1st place Australian in each division will receive the perpetual Australian Sailing Trophy
 - 1st to 3rd in each division will receive medals.
 - Best Performing State
 - Nick Peate Memorial Perpetual Trophy
- 25.2 Presentations of prizes will be held at Royal Queensland Yacht Squadron on Monday 15th January at 1800 or, if later, as soon as possible after the completion of racing on that day. All competitors are requested to attend the presentation of prizes.

26. Disclaimer of Liability

- 26.1 Competitors participate in the Regatta entirely at their own risk. See rule 4, Decision to Race. The Organising Authority will not accept any liability for material damage or personal injury or death sustained in conjunction with or prior to, during, or after the Regatta. Attention is drawn to clauses 18 and 19 of the Notice of Race.

27. [NP] Insurance

- 27.1 Each participating boat shall present a valid insurance certificate showing proof of third-party liability coverage of at least AUD \$5,000,000 (recommended \$10,000,000) (or equivalent) per incident.
- 27.2 Competitors will be required to supply insurance details as part of the online entry. Any competitor not holding this cover shall withdraw their entry.

ATTACHMENT 1

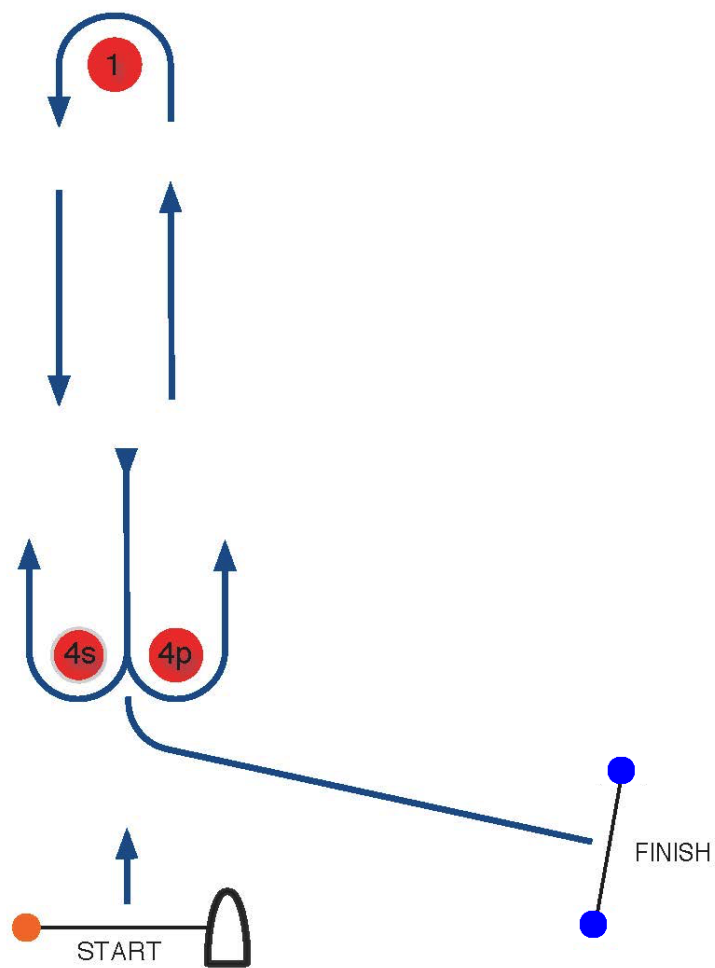
SCHEDULE OF RACES AND COURSE ALLOCATIONS

NOTE: This Schedule may be varied prior to commencement of the Regatta or daily. Competitors are advised to check the official Notice Board or Website for any amendments.

CLASS		Thur 11-Jan	Fri 12-Jan	Sat 13-Jan	Sun 14-Jan	Mon 15-Jan
Laser Radial		Practice				
	Race(s)		1,2,3	4,5,6	7,8	9,10
	Warning	1400	1200	1200	1200	1000
	Course	Alpha	Alpha	Alpha	Alpha	Alpha
Laser 4.7						
	Race(s)		1,2,3	4,5,6	7,8	9,10
	Warning	1410	1210	1210	1210	1010
	Course	Alpha	Alpha	Alpha	Alpha	Alpha
Nacra 15	RMT	Practice				
	Race(s)		1,2,3	4,5,6	7,8,9	10,11,12
	Warning	1400	1000	1300	1000	1000
	Course	Bravo	Bravo	Bravo	Bravo	Bravo
29er		Practice				
	Race(s)		1,2,3	4,5,6	7,8,9	10,11,12
	Warning	1410	1300	1000	1300	1010
	Course	Bravo	Bravo	Bravo	Bravo	Bravo
420	RMT	Practice				
	Race(s)		1,2,3	4,5,6	7,8	9,10
	Warning	1400	1000	1300	1000	1020
	Course	Charlie	Charlie	Charlie	Charlie	Charlie
Bic Techno 293 Plus	RMT	Practice				
	Race(s)		1,2,3	4,5,6	7,8	9,10
	Warning	1410	1300	1000	1300	1000
	Course	Charlie	Charlie	Charlie	Charlie	Charlie
Bic Techno 293	RMT	Practice				
	Race(s)		1,2,3	4,5,6	7,8	9,10
	Warning	1420	1310	1010	1310	1010
	Course	Charlie	Charlie	Charlie	Charlie	Charlie

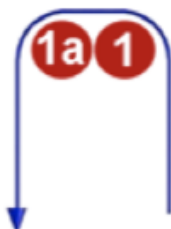
ATTACHMENT 2 COURSES

Course : LR



Course Designation	Course Description
LR	Start - 1 -- 4p - Finish
LR2	Start - 1 -- 4s/4p - 1 - 4p - Finish
LR3	Start -- 1 - 4s/4p -- 1 - 4s/4p -- 1 - 4p - Finish

LRA

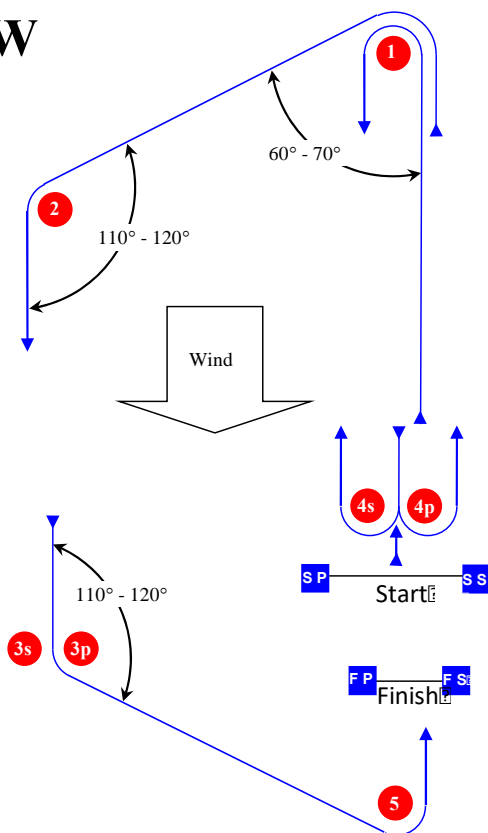


Course: Same As Course LR Except With Offset Mark 1A

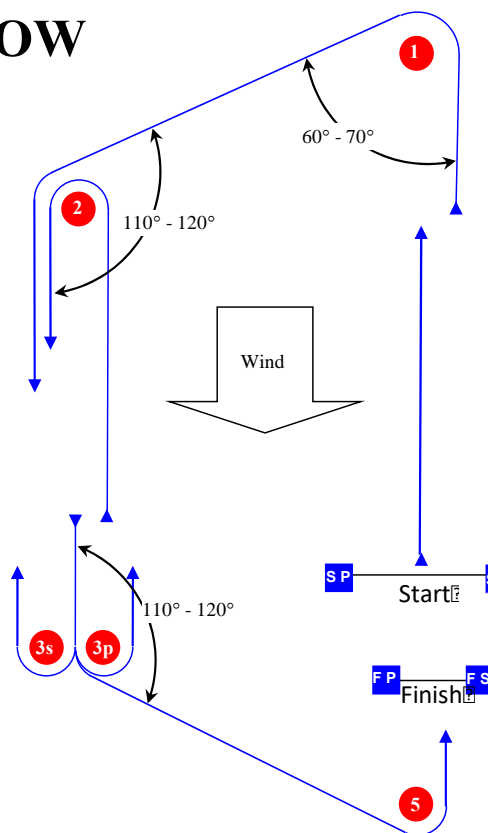
Signal	Mark Rounding Order
LRA2	Start - 1 - 1a - 4s/4p - 1 - 1a - 4p - Finish
LRA3	Start - 1 - 1a - 4s/4p - 1 - 1a - 4s/4p - 1 - 1a - 4p - Finish
LRA4	Start - 1 - 1a - 4s/4p - 1 - 1a - 4s/4p - 1 - 1a - 4s/4p - 1 - 1a - 4p - Finish

Course Illustration Trapezoid with Beat to Finish Separate Finish

IW



OW



Course: Inner Trapezoid with Beat to Finish

Signal	Mark	Rounding Order
IW1	Start	1-2-3s-3p-4s-4p-Finish
IW2	Start	1-2-3s/4p-2-3-3p-4s-Finish
IW3	Start	1-2-3s/4p-2-3-4s/4p-2-3-3p-4s-Finish
IW4	Start	1-2-3s/4p-2-3-4s/4p-2-3-3p-4s-Finish

Course: Outer Trapezoid with Beat to Finish

Signal	Mark	Rounding Order
OW2	Start	1-2-3s/3p-2-3-3p-4s-Finish
OW3	Start	1-2-3s/3p-2-3s/3p-2-3-3p-4s-Finish
OW4	Start	1-2-3s/3p-2-3s/3p-2-3-3p-4s-Finish

Mark	Description
1 2	
3s 3p	
4s 4p	
5	
SS	Starting mark Starboard end
SP	Starting mark Port end
FS	Finishing mark Starboard end
FP	Finishing mark Port end

ATTACHMENT 3**COURSE AREA and MARK ALLOCATIONS**

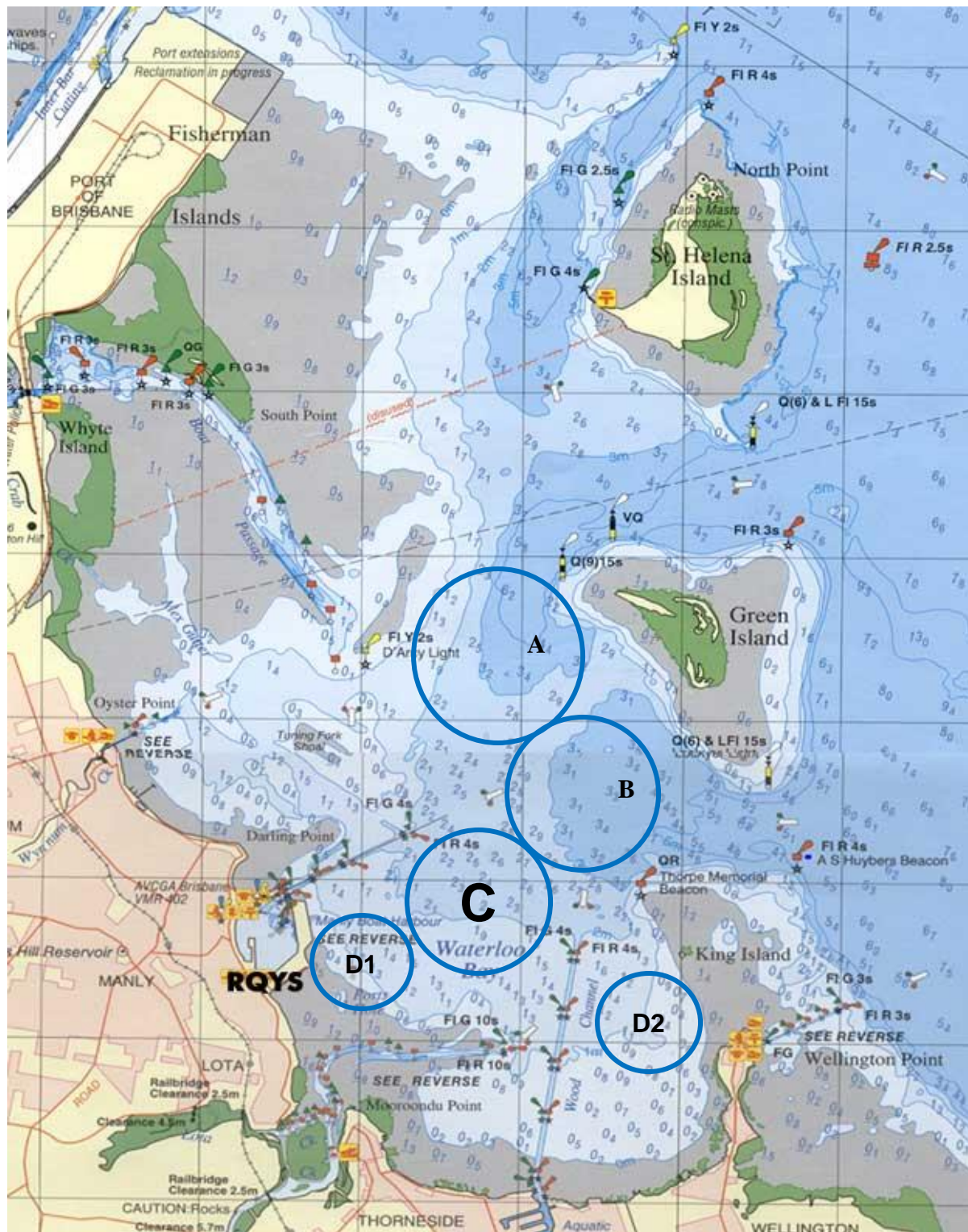
Marks will be as per the following table

FLEET	COURSE AREA	Mark 1/2	1a	3s/3p 4s/4p	REPLACEMENT
Laser Radial	A	Purple		Orange	Yellow
Laser 4.7	A	Purple		Orange	
29er	B	Orange	Orange	Purple	Yellow
Nacra 15	B	Orange	Orange	Purple	
Techno 293 & Techno 293+	C	Orange	Orange	Purple	Yellow
420	C	Orange	Orange	Purple	

ATTACHMENT 4

COURSE AREA LOCATION

Note: Course D location will depend on weather conditions and tide. Course location will be at the sole discretion of the Course Race Officer.

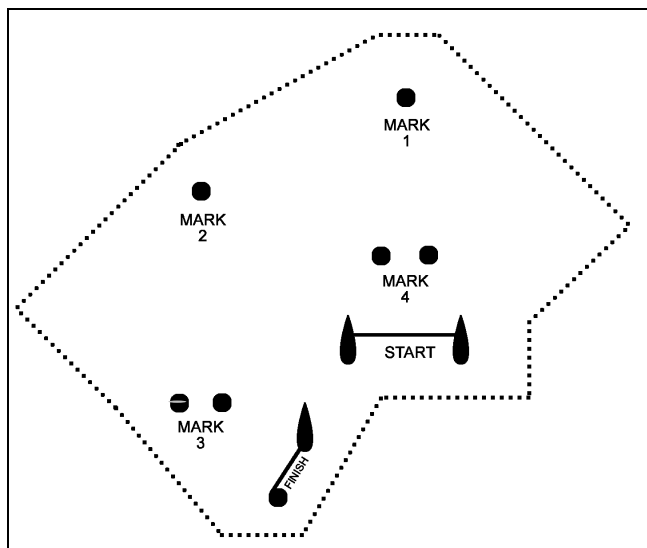


ATTACHMENT 5

RESTRICTED AREA DEFINITION
FOR APPLICATION OF SAILING INSTRUCTION 23

The "restricted areas" as described in SI 23 include any area within the perimeter illustrated below (dotted lines).

Trapezoid Course



Windward-Leeward Course

